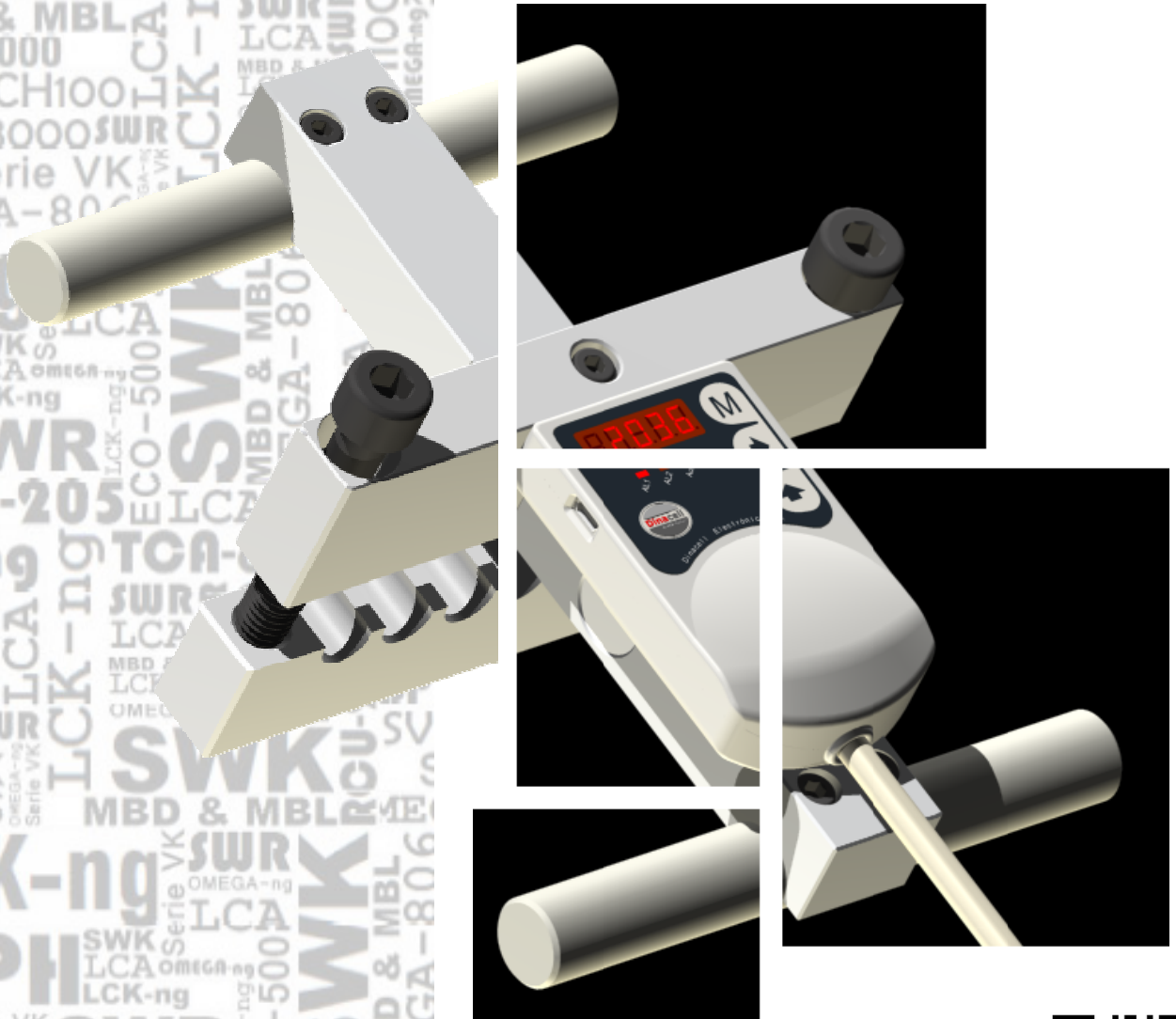




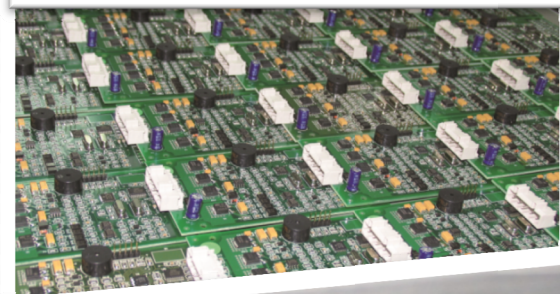
Dinacell Electrónica s.l.

Load Weighing Device for Elevators



LWD Manufacturer

Made in Spain



Since 1994 Dinacell Electrónica has developed several projects in the field of the load cells with applications in different industrial sectors, such as cranes, automotive industry, industrial weighing and handling, silos and elevators. The concept of our work involves the whole process of a load weighing system, including the design and manufacturing of the load cells as well as the electronic devices such as displays and controllers.

The company, located in Madrid (Spain), has in present day a world-wide distribution offering its high quality products with very competitive prices and a special customer service to several countries all around the world.

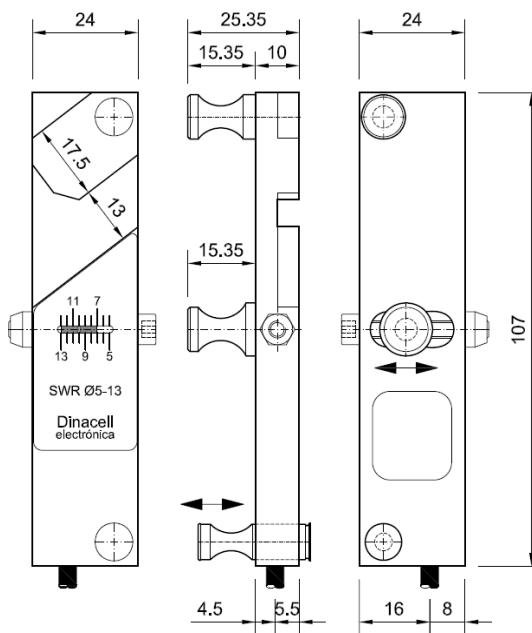
Dinacell counts on qualified and competent people who contribute with their large experience, around 20 years, to the continued improvement and development of the company to raise it to the top, working hard day by day.

During these years the company has won its clients confidence by the good quality of the products and an effective post sales service where our customers are always friendly attended.

This quality is guaranteed by the exclusive selection of the materials and the professionalism of our staff, as well as the introduction of new technologies in the production line.

Index

| <u>Product</u> | <u>Model</u> | <u>Page</u> |
|-----------------------------|----------------------|-------------|
| Wire Ropes | | |
| | SWR | 4 |
| | SWK | 5 |
| | LCA | 6 |
| | LCK-ng | 7 |
| Under Cabin | | |
| | TCA-800 | 8 |
| | BPP-LR | 9 |
| Pressure | | |
| | CH-100 | 10 |
| | CHD-ng | 11 |
| | BPH | 12 |
| Crosshead Sensor | | |
| | PF | 13 |
| | SV-ng | 14 |
| | SV-3000 | 15 |
| | SV-1000 | 16 |
| Under Motor Bedframe | | |
| | BPP / BPP-CB | 17 |
| Control Unit | | |
| | Serie VK | 18 |
| | OMEGA-ng | 19 |
| | OMEGA-804 | 20 |
| | OMEGA-806 | 21 |
| | VK-ng | 22 |
| | RCU-205 | 23 |
| Cabin Display | | |
| | MBD, MBL, MBN1 MBNL1 | 24 |
| Accessories | | |
| | USB Interface | 25 |
| Rope Tension Monitor | | |
| | RTM + OMEGA-800R | 26 |



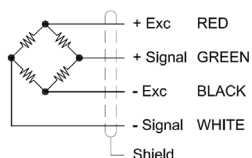
Dimensions in mm.

Loads Table Depending on Ropes Ø

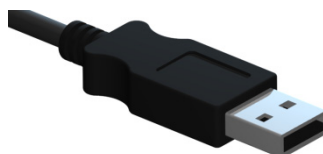
| Ø Rope (mm) | nL (kg) |
|-------------|---------|
| 5 | 200 |
| 6 | 250 |
| 6.5 | |
| 7 | 300 |
| 8 | 350 |
| 9 | 400 |
| 10 | 450 |
| 11 | 550 |
| 12 | 650 |
| 13 | 800 |

- Individual sensor for ropes
- Fast and easy to install
- Just one sensor format to cover the range of ropes Ø 5-13 mm., the middle pin is used to adjust the sensor to the required rope diameter.

Wiring Diagram



USB Connection



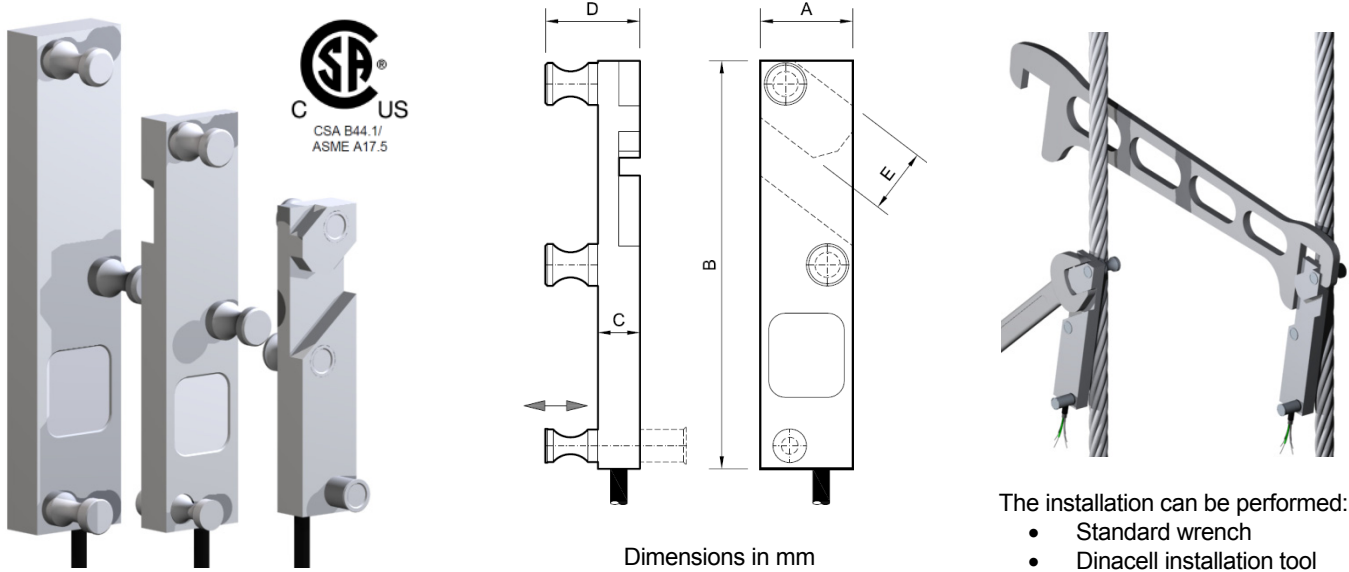
The Installation can be performed:

- Standard wrench
- Dinacell installation tool

Technical Characteristics

| | | | |
|----------------------------|----------------|---|---------------------------------------|
| Nominal Load (nL) | 200...800 kg | Minimum Insulation Resistance (V.Test = 100V) | 4 GΩ |
| Sensibility | 0.5...2.0 mV/V | Maximum Working Load | 120 % F.S. |
| Tolerance Adjust on Zero | 20 % F.S. | Load Limit Without Loss of Characteristics | 150 % F.S. |
| Service Temperature Range | -20...60 °C | Protection Class | IP65 |
| Input Resistance | 350 ± 1.5Ω | Material | Aluminum |
| Output Resistance | 350 ± 1.5Ω | Surface Treatment | Anodized |
| Accuracy | 0.25 % F.S. | Cable Type | Flexible, 4x0.09 mm ² Ø4.3 |
| Maximum Excitation Voltage | 12 V. | Cable Length | 0.5, 1m, or 2m. |

SWK



The installation can be performed:

- Standard wrench
- Dinacell installation tool

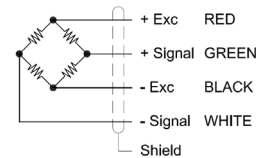
- Load limiter sensor designed for measuring the load on steel ropes that work to traction (elevators, lifts...)

| Dimensions (mm.) | Ø Rope | 4 | 5 | 6 | 6.5 | 8 | 9 | 10 | 11 | 12 | 13 | 14 | 15 | 16 |
|--|---------|--------------------|--------------------|--------------------|--------------------|--------------------|--------------------|--------------------|--------------------|--------------------|---------------------|---------------------|---------------------|---------------------|
| | nL (kg) | 150 | 200 | 250 | | 350 | 400 | 450 | 550 | 650 | 800 | 950 | 1100 | 1250 |
| A | 12.5 | 18 | 20 | | | | 22 | | 24 | | | 28 | | |
| B | 70 | 80 | 87 | | | | 97 | | 107 | | | 110 | | 130 |
| C | 8 | 10 | | | | | | | | | | 12 | | |
| D | 14 | 18.5 | | | 21 | | 22.5 | | 25 | | 30.5 | | | |
| E | 10 | 14 | | | | 15.5 | | 17.5 | | | - | | | |
| Nominal load (nL) kg. Depending on Mod | SWK4 | 150 ⁽¹⁾ | 130 ⁽²⁾ | | | | | | | | | | | |
| | SWK5 | 250 ⁽²⁾ | 200 ⁽¹⁾ | 150 ⁽²⁾ | | | | | | | | | | |
| | SWK6 | | 300 ⁽²⁾ | 250 ⁽¹⁾ | 200 ⁽²⁾ | | | | | | | | | |
| | SWK6.5 | | | 350 ⁽²⁾ | 250 ⁽¹⁾ | 200 ⁽²⁾ | | | | | | | | |
| | SWK8 | | | | 400 ⁽²⁾ | 350 ⁽¹⁾ | 250 ⁽²⁾ | | | | | | | |
| | SWK9 | | | | | 500 ⁽²⁾ | 400 ⁽¹⁾ | 300 ⁽²⁾ | | | | | | |
| | SWK10 | | | | | | 550 ⁽²⁾ | 450 ⁽¹⁾ | 350 ⁽²⁾ | | | | | |
| | SWK11 | | | | | | | 650 ⁽²⁾ | 550 ⁽¹⁾ | 450 ⁽²⁾ | | | | |
| | SWK12 | | | | | | | | 750 ⁽²⁾ | 650 ⁽¹⁾ | 550 ⁽²⁾ | | | |
| | SWK13 | | | | | | | | | 900 ⁽²⁾ | 800 ⁽¹⁾ | 700 ⁽²⁾ | | |
| | SWK14 | | | | | | | | | | 1050 ⁽²⁾ | 950 ⁽¹⁾ | 850 ⁽²⁾ | |
| | SWK15 | | | | | | | | | | | 1200 ⁽²⁾ | 1100 ⁽¹⁾ | 1000 ⁽²⁾ |
| SWK16 | | | | | | | | | | | | 1350 ⁽²⁾ | 1250 ⁽¹⁾ | |

Optional USB Connector



Wiring Diagram



Total Load = Nominal Load (see table) kg. X Number of Ropes

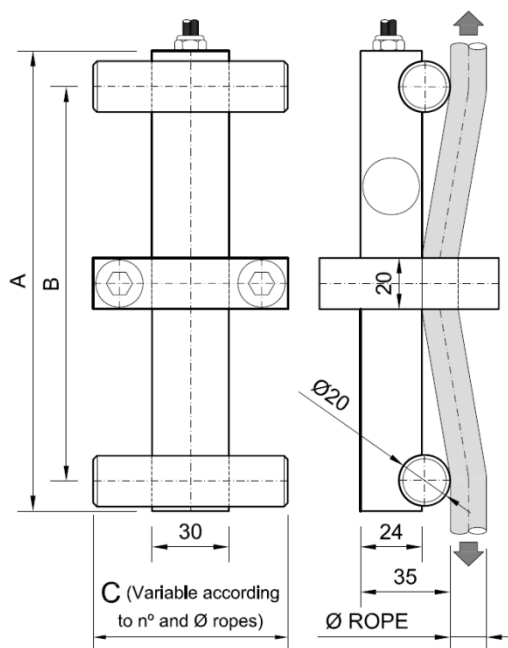
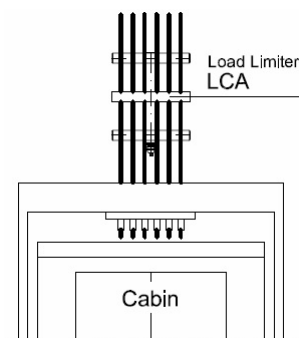
Technical Characteristics

| | | | |
|---------------------------|----------------|---|------------|
| Nominal Load (nL) | 150...1250 kg | Maximum Excitation Voltage | 12 V. |
| Sensibility | 1,3...2,0 mV/V | Minimum Insulation Resistance (V.Test = 100V) | 4 GΩ |
| Tolerance Adjust on Zero | 20 % F.S. | Maximum Working Load | 150 % F.S. |
| Service Temperature Range | -20...60 °C | Load limit Without Loss of Characteristics | 200 % F.S. |
| Input Resistance | 350 ... 400 Ω | Protection Class | IP65 |
| Output Resistance | 350 ± 1.5Ω | Material | Aluminum |
| Accuracy | 0.25 % F.S. | Surface Treatment | Anodized |

LCA

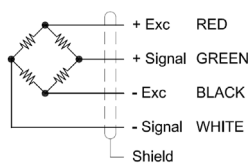


| nL. (t.) | A | B |
|----------|-----|-----|
| 1.6 | 166 | 140 |
| 4 | | |
| 6 | 180 | 154 |



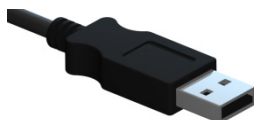
Dimensions in mm

Wiring Diagram



- Load limiter designed for measuring the load on several steel ropes (traction ropes, lifts, elevators...)

Optional USB connector



| Nº of Ropes | Ø of Ropes (mm) | | | |
|-------------|-----------------|---------|----------|-----------|
| | 3 ... 5 | 6 ... 8 | 8 ... 13 | 14 ... 16 |
| 1 | 76 | | | |
| 2 | 76 | | | |
| 3 | | | 96 | 96 |
| 4 | 76 | | | 126 |
| 5 | | | 126 | |
| 6 | 96 | | | 156 |
| 7 | -- | | 156 | 186 |
| 8 | -- | 126 | | |

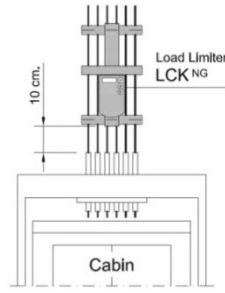
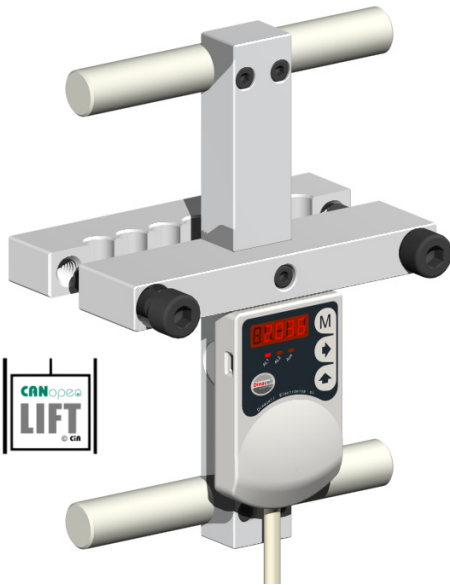
Remarks:

To manage the orders, please specify the following information:

- Nº of ropes
- Ø of ropes

Technical Characteristics

| | | | |
|--|----------------|--|-------------------------------------|
| Nominal Load (nL) | 1.6, 4, 6 t | Input Resistance | 350...400 Ω |
| Sensibility | 1.4...2.0 mV/V | Output Resistance | 350Ω ± 2 Ω |
| Tolerance Adjust on Zero | 10 % F.S. | Maximum Working Load | 150% F.S. |
| Non Linearity | 0.11 % F.S. | Load Limit Without Loss of Characteristics | 200 % F.S. |
| Accuracy | 0.25 % F.S. | Protection Class | IP 65 |
| Service Temperature Range | -20...60 °C | Cable Type | Flexible, 4x0.22 mm ² Ø6 |
| Maximum Excitation Voltage | 12V. | Cable Length | 2 m. |
| Insulation Resistance (V. Test = 100V) | >4 GΩ | Material | Aluminum |

LCK^{ng}

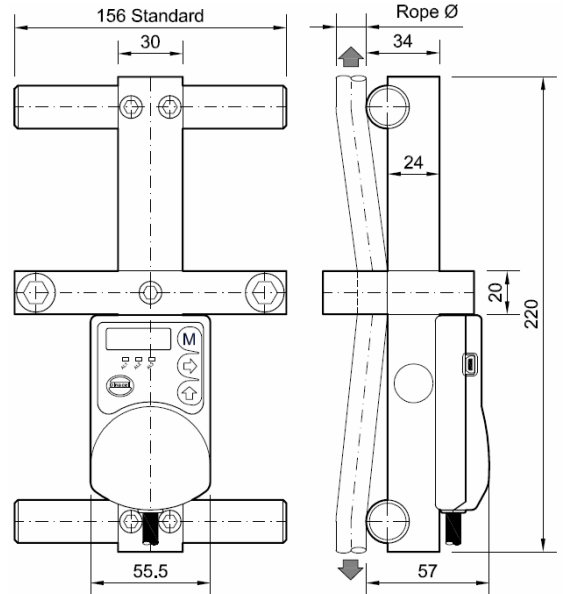
Dimensiones en mm

STANDARD CLAMP

- Nº of ropes **3 to 7**
- Ø of ropes **8 to 13mm.**

Remarks:

Other Ø or nº of ropes Please consult with sales Dept.



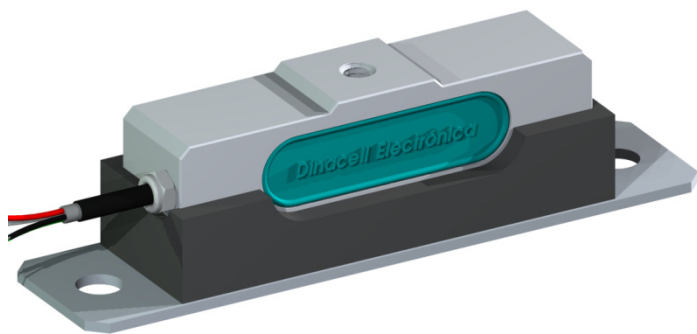
| Model | Output Relays | Analog Out 0-10V - 4-20mA | Hold Input (Cade) | Cabin Display MBD | CanOpenLift 417 | Interface | NG Wifi and USB update | Wiring connection | | | | | | | | | |
|---------|---------------|------------------------------|-------------------|----------------------|-----------------|-----------------|---------------------------|-------------------|--------|----------|--------|---------|---------------|--------------|----------|---------------|---------------|
| | | | | | | | | 1 Black | 2 Red | 3 Purple | 4 Blue | 5 Pink | 6 Brown | 7 White | 8 Gray | 9 Green | 10 Yellow |
| LCK_2RM | 2 | - | Yes | Yes | - | 5 Digits 3 Keys | Yes | Gnd | 24 Vdc | Relay 1 | | Relay 2 | | Hold (+) | Hold (-) | Cabin Display | Cabin Display |
| LCK_2Ra | 2 | Yes | Yes | - | - | | Analog 4-20ma | | | | | | | | | Analog 0-10v | |
| LCK_3R | 3 | - | Yes | - | - | | Relay 3 | | | - | - | | | | | | |
| LCK_C | - | - | Yes | - | Yes | | Can HIGH | | | Can LOW | - | - | - | - | | | |
| LCK_Ca | - | Yes | Yes | - | Yes | | - | | | - | - | - | Analog 4-20ma | Analog 0-10v | | | |

- Load limiter designed for measuring the load on several steel ropes (traction ropes, lifts, elevators...)
- Integrated electronics of great precision and stability for steel ropes load measurements.
- Manual calibration or Auto-calibrated. No need to introduce a well-known weight in cabin for its adjustment(CELL value).
- Hold Input for chain compensation.
- 2 output Relays or 3 output relays (Optional).
- Cabin Display Output for Full load and overload indication(Optional).
- Remote WIFI configuration and USB connection for firmware upgrade
- Analog Ouput (4-20ma, 0-10v or 0-5v Optional)
- CanOpenLift Cia417 (Optional)

Technical characteristics

| | | | |
|---|-------------------------------|--|------------------------------|
| Nominal load (nL) | 3, 4, 6 t | Insulation resistance (V. Test = 100V) | >4 GΩ |
| Accuracy | 0.1 % F.S. | Maximum working load | 150% F.S. |
| Service temperature range | -20...60 °C | Box / Protection class | Fireproof plastic / IP-50 V0 |
| Relays Contacts (Nominal Switching Capacity) | 1A - 30V DC 0.3A - 125V AC | Cable type | 10x0.22 mm ² Ø6 |
| Excitation voltage | 18-40 VDC | Cable length | 2 m. |
| Maximum Current consumption | <65 mA | Material Load Cell | Aluminum |

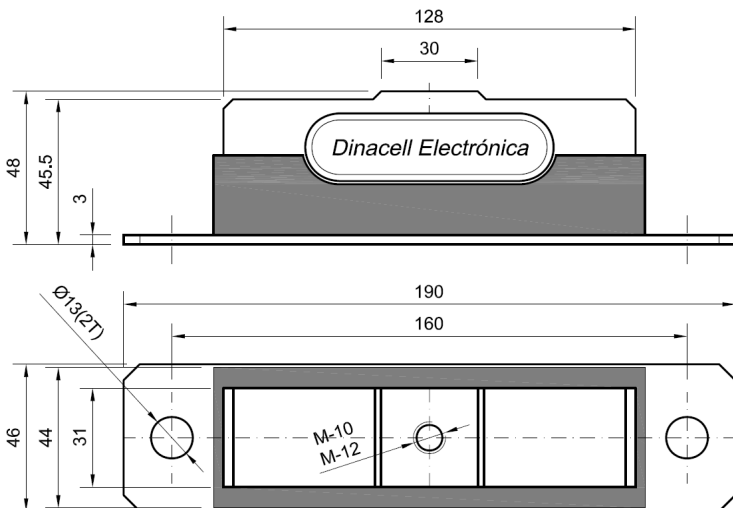
TCA-800



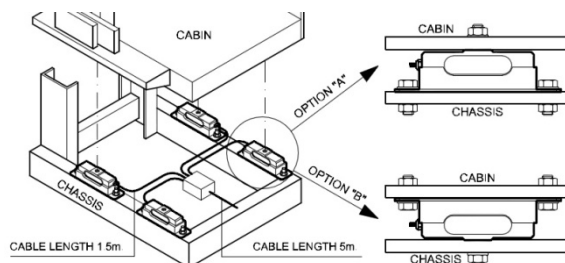
- Maximum accuracy load sensor designed for under car installations.
- Factory calibrated.
- It is not necessary to use a known weight for adjustment of installations.
- It comes with a silent-block to avoid vibration transmission.
- Can be used together with dummy TCA.
- The following models are available (optional USB connector)

They are Manufactured in 4 Options

| Model | Meter | Number of Sensors |
|---------------|-------|--------------------------------------|
| TCA-800/I-M10 | M10 | 1 (individual) 800 kg |
| TCA-800/I-M12 | M12 | |
| TCA-800/G-M10 | M10 | 4 (in group) 800 kg x 4 = 3200 kg |
| TCA-800/G-M12 | M12 | |



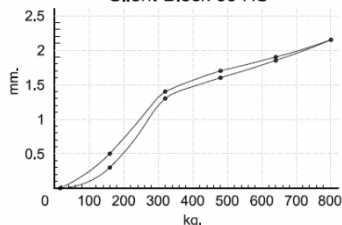
Dimensions in mm.



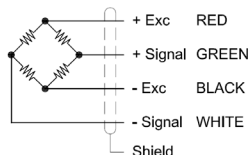
Installation Detail

Strain curve

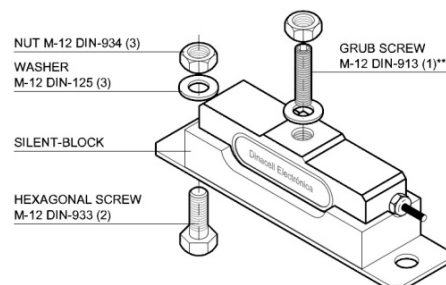
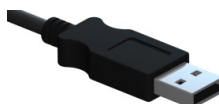
Silent-Block 60 HS°



Wiring Diagram



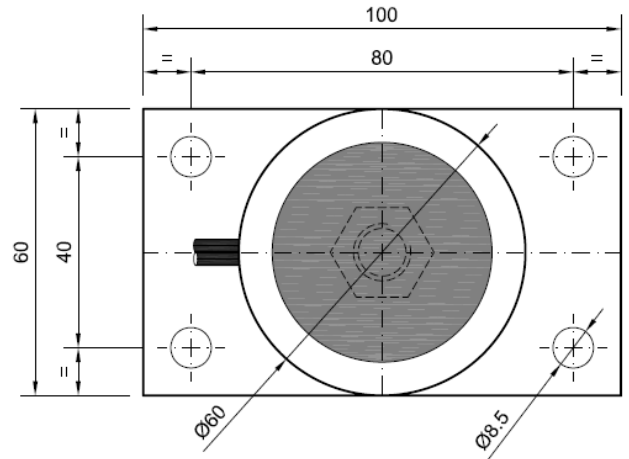
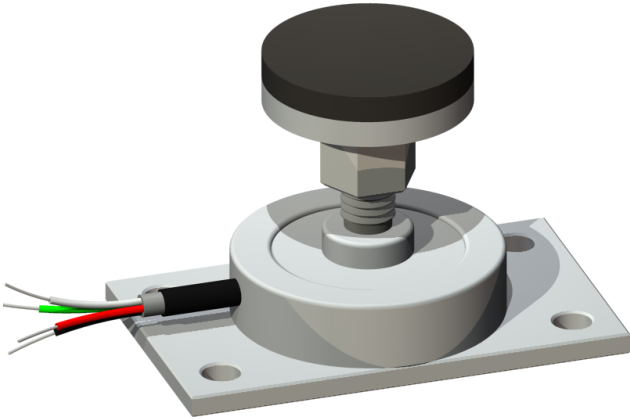
Optional USB Connector



Technical Characteristics

| | | | |
|-------------------------------|-----------------|---|--------------------------------|
| Nominal Load (nL) | 800 Kg. | Output Resistance | 1000 ± 5 Ω |
| Sensibility | 2 ± 0.2% (mV/V) | Minimum Insulation Resistance (Test voltage = 100V) | 4 GΩ |
| Tolerance Adjust on Zero | ± 2 % F.S. | Maximum Working Load | 150 % F.S.. |
| Compensated Temperature Range | -10...40 °C | Load Limit Without Loss of Characteristics | 180 % F.S. |
| Operation Temperature | -20...60 °C | Protection Class | IP 66 |
| Accuracy | ± 0.06 % F.S. | Connection Cable | ∅6 mm 4 x 0.22 mm ² |
| Non Linearity | ± 0.04 % F.S. | Cable Length | 5 m (*/I) ó 1.5 m (*/G) |
| Maximum Excitation Voltage | 12 V | Material | Aluminum |
| Input Resistance | 1050 ± 60 Ω | | |

BPP-LR



- Load cell specially designed for the Installation under cabin (placed in the center of chasis)
- Equipped with silent-block pad to avoid the transfer of vibrations.
- Can be connected to any unit control on the Series **RCU**, **VK**, except the **VK-Omega**.

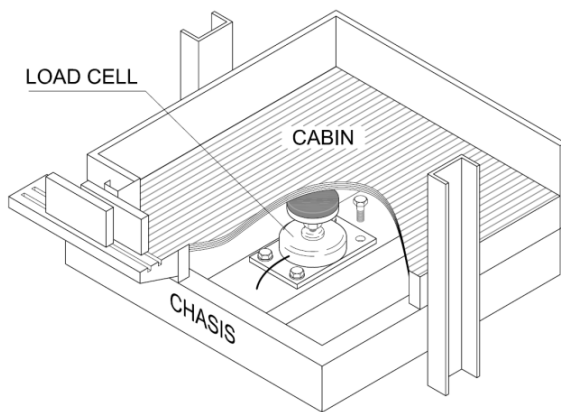
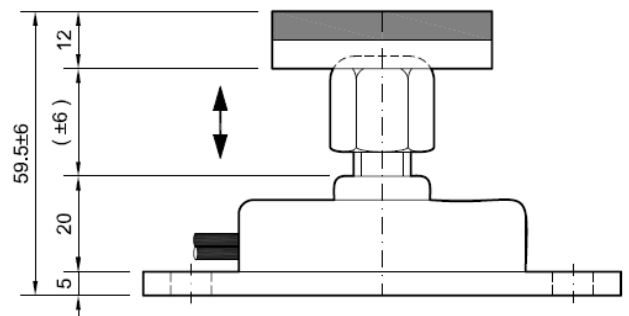
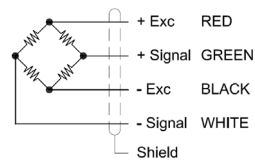


Diagram of Installation

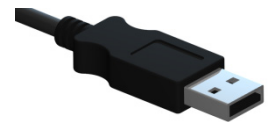


Dimensions in mm.

Wiring Diagram

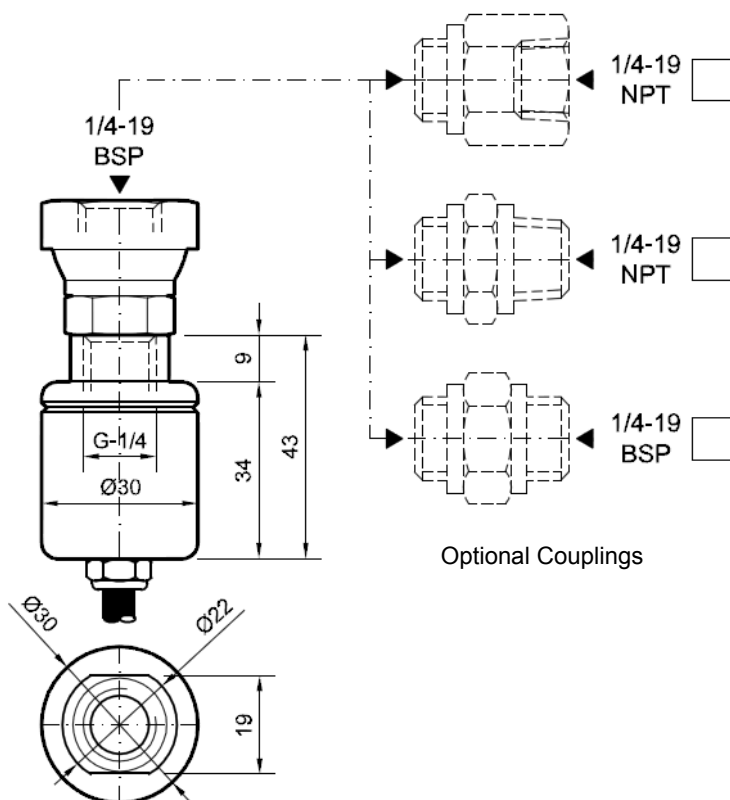


Optional USB Connector



Technical Characteristics

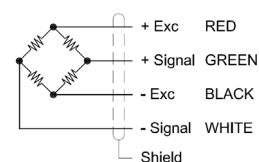
| | | | |
|-------------------------------|----------------|---|------------------------------------|
| Nominal Load (nL) | 1.2 & 3 t | Maximum Excitation Voltage | 12 V |
| Sensibility | 1.4...2.0 mV/V | Minimum Insulation Resistance (V.Test = 100V) | 4 GΩ |
| Tolerance Adjust on Zero | 5 % F.S. | Maximum Working Load | 150 % F.S. |
| Input Resistance | 350 ± 3Ω | Protection Class | IP67 |
| Output Resistance | 350 ± 2Ω | Cable Type | Flexible Ø6 4x0.22 mm ² |
| Compensated Temperature Range | -10...40 °C | Cable Length | 4 m |
| Service Temperature Range | -20...60 °C | Material | Alloy Steel |
| Accuracy | 0.2 % | Surface Treatment | Chemical Nickel |
| Non Linearity | 0.07% F.S. | | |



Dimensions in mm.

- Pressure sensor model CH-100, suitable to control the load in hydraulic elevators in a simple and economical way.
- Measure range of 0 to 100 bars.
- Can be connected to any unit control on the Series **RCU**, **VK**, except the **VK-Omega**
- Factory calibrated. If connected to the unit control **VK**, there is no need to use any known weight in the installation.

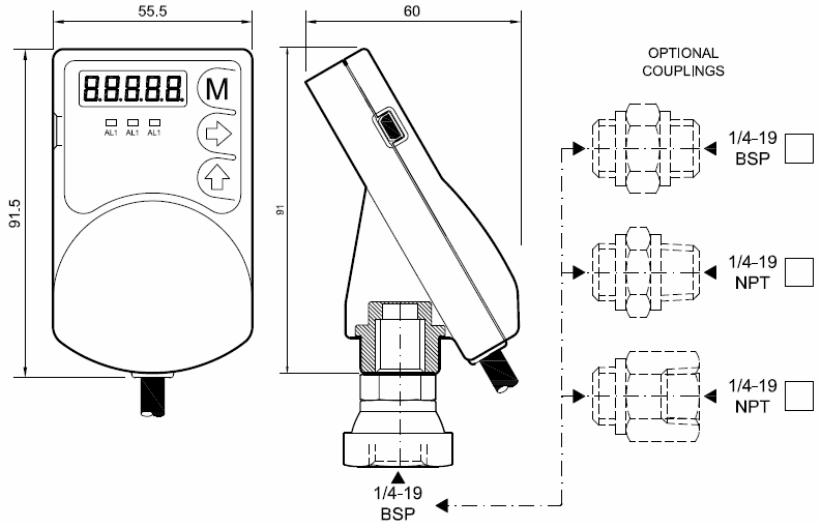
Wiring Diagram



Technical Characteristics

| | | | |
|---|---------------|--|-------------------------------------|
| Full Scale F.S. | 100 bar | Load Limit Without Loss of Characteristics | 200 % F.S. |
| Non Linearity | <0.072 % F.S. | Protection Class | IP 67 |
| Maximum Excitation Voltage | 12 V | Cable Connection | Flexible, 4x0.22 mm ² Ø6 |
| Hysteresis | <0.09 % F.S. | Cable Length | 4 m. |
| Accuracy | <0.2 % | Material | Sensor: Stainless Steel |
| Minimum Insulation Resistance (V.Test = 100V) | 4 GΩ | | Casing: Aluminum |
| Maximum Working Load | 150 % F.S. | Surface Treatment | Anodized |
| Service Temperature | -20...60°C | | |

CHD-ng

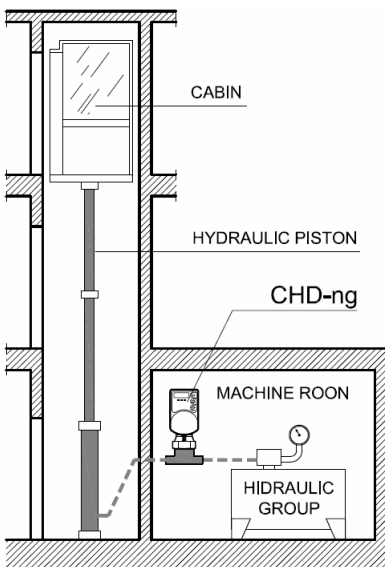


Dimensions in mm.

| Model | Output Relays | Analog Out 0-10V - 4-20mA | Hold Input (Cade) | Cabin Display MBD | CanOpenLift-417 | Interface | NG Wifi and USB update | Wiring connection | | | | | | | | | |
|---------|---------------|------------------------------|-------------------|----------------------|-----------------|-----------------|---------------------------|-------------------|--------|---------------|---------------|--------------|---------|----------|----------|---------------|---------------|
| | | | | | | | | 1 Black | 2 Red | 3 Purple | 4 Blue | 5 Pink | 6 Brown | 7 White | 8 Gray | 9 Green | 10 Yellow |
| CHD_2RM | 2 | - | Yes | Yes | - | 5 Digits 3 Keys | Yes | Gnd | 24 Vdc | Relay 1 | | Relay 2 | | Hold (+) | Hold (-) | Cabin Display | Cabin Display |
| CHD_2Ra | 2 | Yes | Yes | - | Yes | | Relay 3 | | | Analog 4-20ma | Analog 0-10v | | | | | | |
| CHD_3R | 3 | - | Yes | - | Yes | | Can HIGH | | | Can LOW | - | - | - | - | | | |
| CHD_C | - | - | Yes | - | Yes | | - | | | - | - | - | - | - | | | |
| CHD_Ca | - | Yes | Yes | - | Yes | | - | | | - | Analog 4-20ma | Analog 0-10v | | | | | |

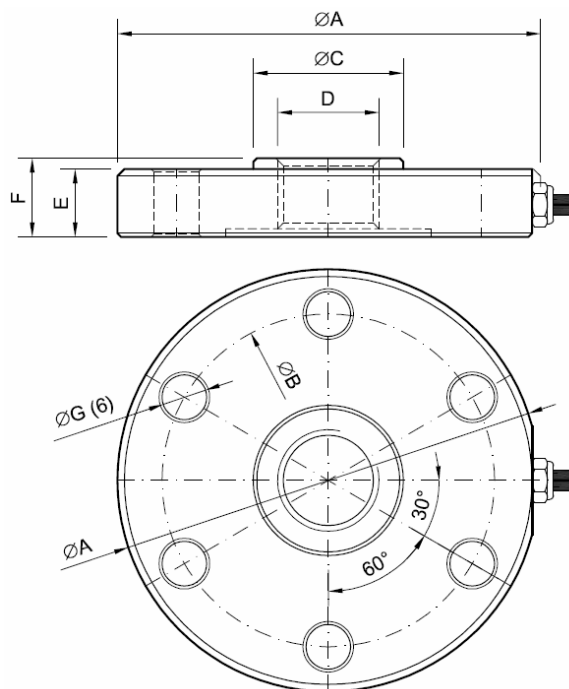
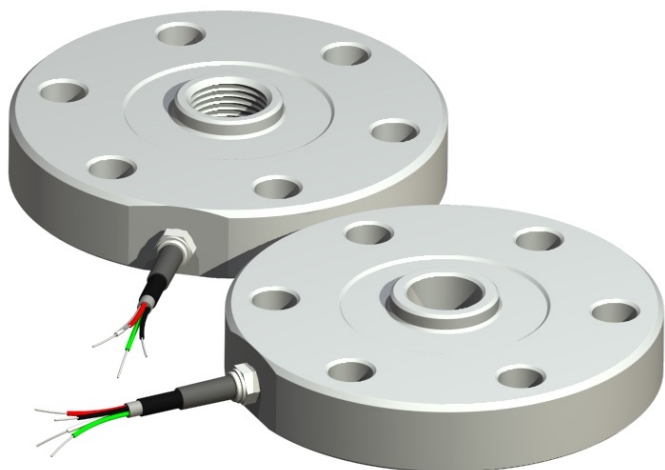
- Digital pressure sensor mod. with an integrated circuit developed to measure and control the pressure in the hydraulic elevators.
- Measure range of 0 to 100 bar.

Technical characteristics



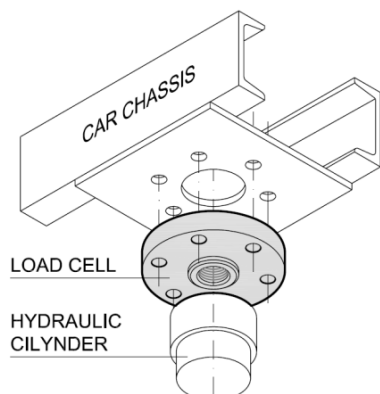
| | |
|--|------------------------------|
| F.S. | 100 bar. |
| Non linearity | 0.11 % F.S. |
| Accuracy | 0.25 % F.S. |
| Service temperature range | -20...60 °C |
| Relays Contacts (Nominal Switching Capacity) | 1A - 30V DC 0.3A - 125VAC |
| Excitation voltage | 18-40 VDC |
| Maximun Current consumption | <65 mA |
| Insulation resistance in the sensor (V. Test = 100V) | >4 GΩ |
| Maximum working load | 150% F.S. |
| Box / Protection class | Fireproof plastic / IP-50 V0 |
| Cable type | 10x0.22 mm2 Ø6 |
| Cable length | 2 m. |
| Material sensor | Stainless steel |

BPH-PM BPH-GD

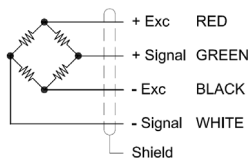


- Load cells specially designed to work in traction and compression.
- For hydraulic elevators, the sensor is mounted between the piston rod and the cabin chassis.

Dimensions in mm.



Wiring Diagram

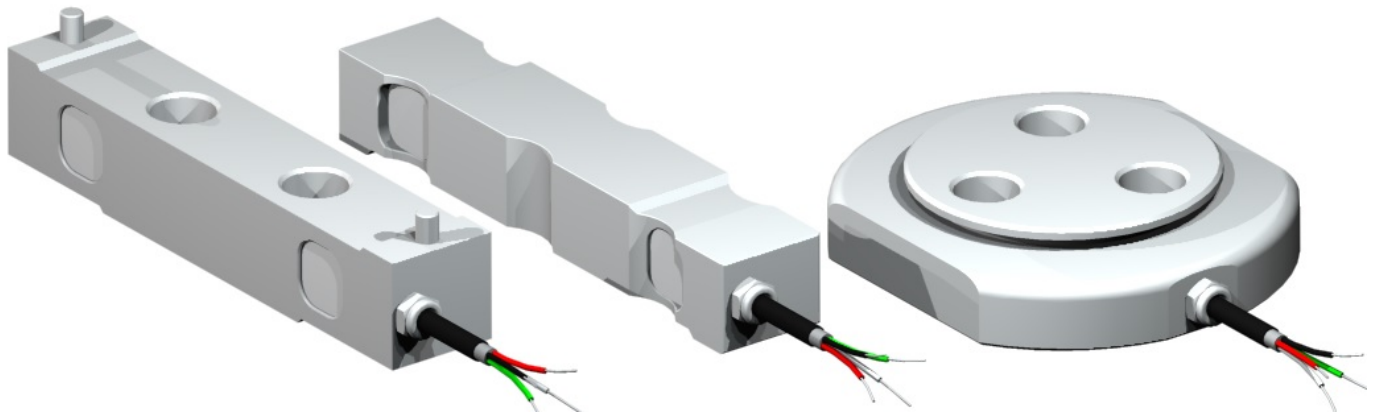


| Mod. | PM-24 | | PM-30 | | GD25 | |
|--------|-------|---|-------|---|------|---|
| nL (t) | 3 | 6 | 3 | 6 | 3 | 6 |
| ØA | 118 | | | | 145 | |
| ØB | 93 | | | | 12.5 | |
| ØC | 36 | | 42 | | 36 | |
| D | M-24 | | M-30 | | Ø25 | |
| E | 19 | | | | 25 | |
| F | 22 | | | | 30 | |
| ØG | 12.5 | | | | 15 | |

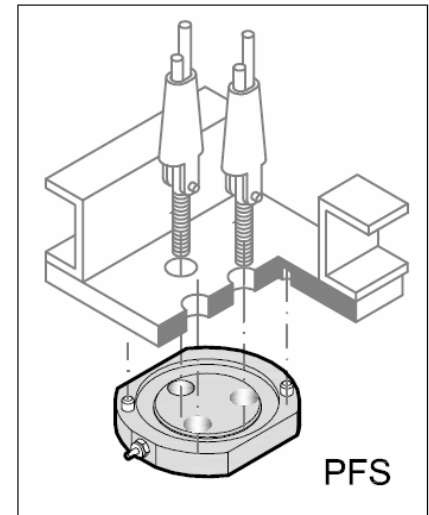
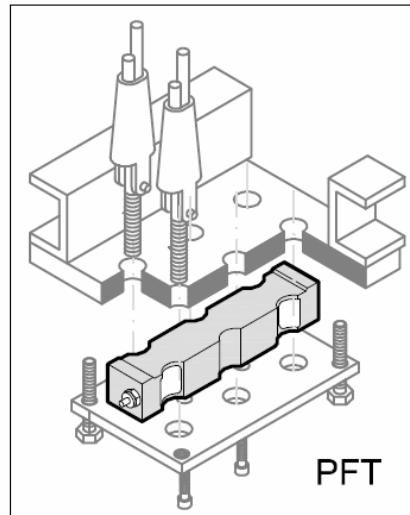
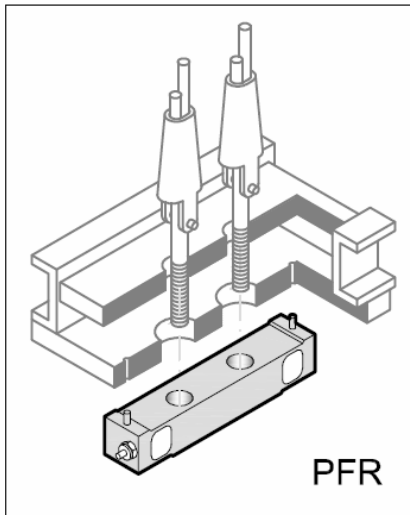
Technical Characteristics

| | | | |
|-----------------------------------|----------------|---|---------------------------|
| Nominal Load (nL) | 3 - 6 t. | Creep (over 30 Minutes) | 0.06% F.S. |
| Sensibility | 1.4...2.0 mV/V | Maximum Excitation Voltage | 12 V |
| Tolerance Adjust on Zero | 5 % F.S. | Minimum Insulation Resistance (V.Test = 100V) | 4 GΩ |
| Temperature Effect on Sensitivity | 0.044% F.S. | Maximum Working Load | 150 % F.S. |
| Temperature Effect on Zero | 0.035% F.S. | Breaking Load | >300 % F.S. |
| Compensated Temperature Range | -10...40 °C | Protection Class | IP67 |
| Service Temperature Range | -20...60 °C | Cable Type | Ø6 4x0.22 mm ² |
| Input Resistance | 350 ± 3Ω | Cable Length | 4 m |
| Output Resistance | 350 ± 2Ω | Material | Alloy steel |
| Histeresys Error | 0.067 % F.S. | Surface Treatment | Chemical Nikel |
| Non Linearity | 0.04% F.S. | | |

PF



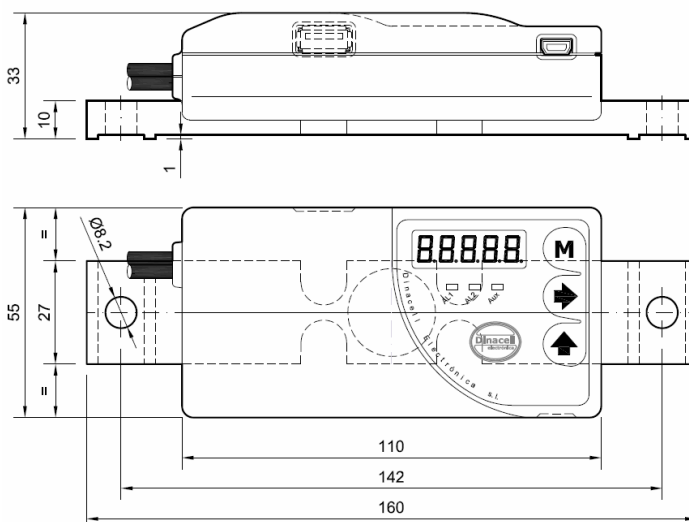
- Load cell especially designed to work on compression.
- Made of alloy steel or aluminum material of high resistance with anti-corrosion treatment.
- Application: on the dead end hitch or in the terminals of the traction cable (elevators, cranes...).
- Nominal load: 1000 - 3000 - 6000 kg



Technical Characteristics

| | | | |
|-----------------------------------|--------------|---|------------------------------------|
| Nominal Load (nL) | 1, 3, 6 t | Non Linearity | 0.108% F.S. |
| Sensibility | 1.4...2 mV/V | Maximum Excitation Voltage | 12 V |
| Tolerance Adjust on Zero | 5 % F.S. | Minimum Insulation Resistance (V.Test = 100V) | 4 GΩ |
| Temperature Effect on Sensitivity | 0.133% F.S. | Maximum Working Load | 150 % F.S. |
| Temperature Effect on Zero | 0.067% F.S. | Break Load | >250 % F.S. |
| Compensated Temperature Range | -10...40 °C | Protection Class | IP67 |
| Service Temperature Range | -20...60 °C | Cable Type | Flexible Ø6 4x0.22 mm ² |
| Input Resistance | 350 ± 3Ω | Cable Length | 4 m |
| Output Resistance | 350 ± 2Ω | Material | Alloy Steel / Aluminum |
| Hysteresis Error | 0.116 % F.S. | Surface Treatment | Chemical Nikel / Anodized |

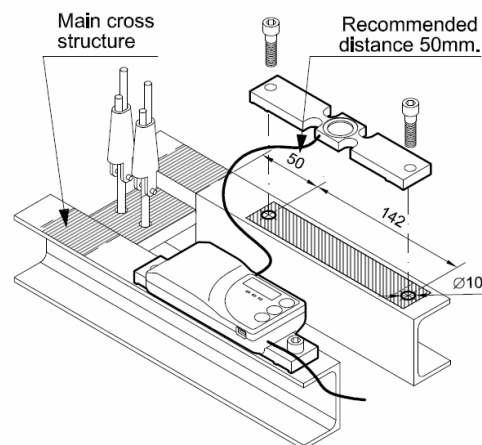
SV-ng



Dimensions in mm.

| Model | Relay | Analog outputs 0-10V - 4-20mA | Hold I/Output (Code) | Cabin Display MBD | Can Open Lift 417 | Interface | NG Wifi and USB update | Wiring connection | | | | | | | | | |
|-------------|-------|----------------------------------|----------------------|-------------------|-------------------|-----------------|------------------------------|-------------------|-----------|----------|--------|------------------|-----------------|-------------|-------------|------------------|------------------|
| | | | | | | | | 1 Black | 2 Red | 3 Purple | 4 Blue | 5 Pink | 6 Brown | 7 White | 8 Gray | 9 Green | 10 Yellow |
| SV-3000_2RM | 2 | - | Yes | Yes | - | 5 Digits 3 Keys | Yes | Gnd | 24 Vdc | Relay 1 | | Relay 2 | | Hold (+) | Hold (-) | Cabin Display | Cabin Display |
| SV-3000_2Ra | 2 | Yes | | - | - | | | | | Relay 3 | | Analog 4-20mA | Analog 0-10V | | | | |
| SV-3000_3R | 3 | - | | - | - | | | | | - | - | - | - | - | - | - | - |
| SV-3000_C | - | - | | - | Yes | | | | | | | | | | | | |
| SV-3000_Ca | - | Yes | | - | Yes | | | | | - | Yes | Analog 4-20mA | Analog 0-10V | | | | |

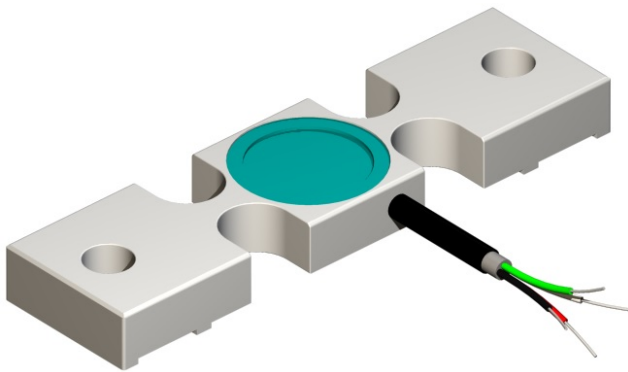
- Load limiter design for measuring the load based on the beam detector
- Integrated electronics of great precision and
- Manual calibration or Auto-calibrated. No need to introduce a well-known weight in cabin for its adjustment
- Hold Input for chain compensation.
- 2 output Relays or 3 output relays (Optional).
- Cabin Display Output for Full load and overload indication(Optional).
- Remote WIFI configuration and USB connection for firmware upgrade
- Analog Output (4-20ma, 0-10v or 0-5v Optional)
- CanOpenLift Cia417 (Optional)
- Equipped with USB port for connecting a 2nd load cell



Technical Characteristics

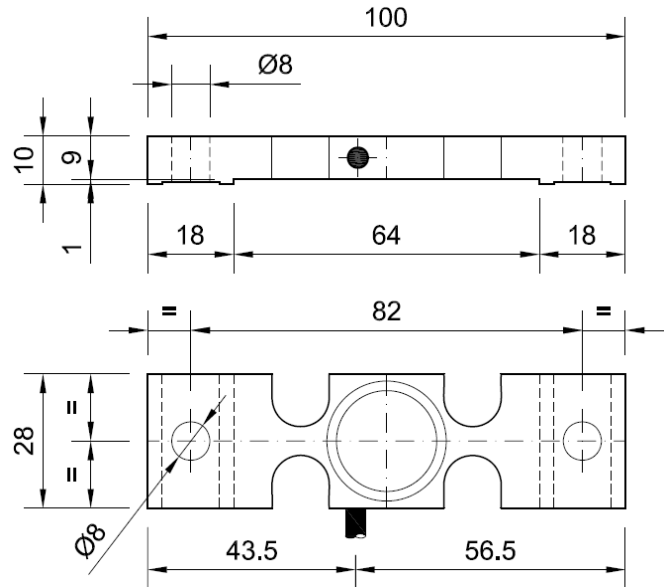
| | | | |
|--|-------------|----------------------|----------------------------|
| Accuracy | 0.25 % F.S. | Maximum Working Load | 150% F.S. |
| Service temperature range | -20...60 °C | Protection class | IP 65 |
| Relays | 2A / 250V | Cable type | 10x0.22 mm ² Ø6 |
| Power supply voltage | 12/24V | Cable length | 2 m. |
| Current consumption | <250 mA | Load cell material | Alloy steel |
| Insulation Resistance (V. Test = 100V) | >4 GΩ | Surface treatment | Chemical nickel |

SV-3000



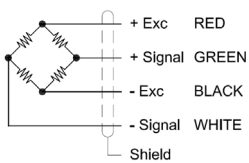
Deformation 3000 $\mu\epsilon$

- Sensor designed to work on traction and compression, especially for weighing depending on the deformations of steel beams.
- Easy to install and suitable for any type of beam.
- Application: load limitation on metallic structures, elevation systems (lifts, elevators, freight elevators...).

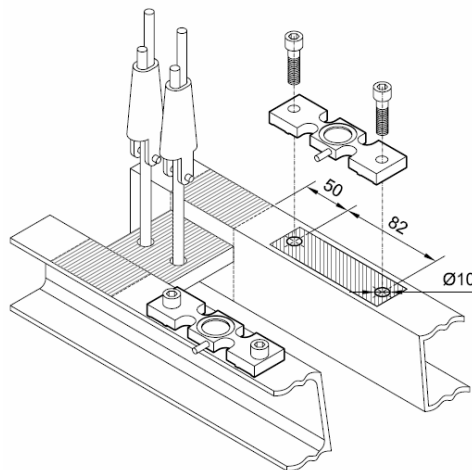


Dimensions in mm.

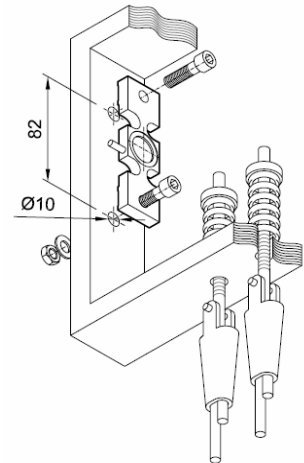
Wiring Diagram Cable



Optional USB Connection



On the crosshead beam



Mounting on fixed point

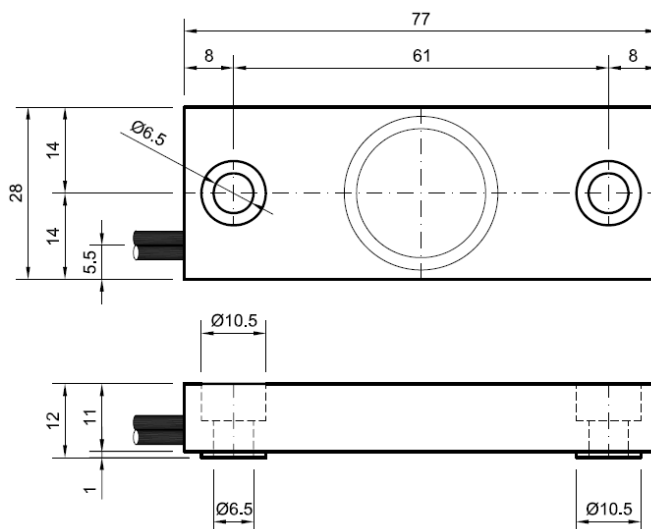
Technical Characteristics

| | | | |
|----------------------------|-----------------------------|---|--|
| Sensibility | 2 mV/V @ 3000 $\mu\epsilon$ | Output Resistance | 350 \pm 2 Ω |
| Tolerance Adjust on Zero | \pm 20 % F.S. | Minimum Insulation Resistance (V.Test = 100V) | 4 G Ω |
| Tolerance on Zero | \pm 10 % F.S. | Maximum Deformation | 150 % F.S. |
| Maximum Excitation Voltage | 12 V | Cable Type | Ø4 - 4 x 0.14 mm ² Shielded |
| Accuracy | 0.2 % | Cable Length | 6 m |
| Service Temperature Range | -20...60 $^{\circ}$ C | Material | Alloy Steel |
| Input Resistance | 350 \pm 2 Ω | Surface Treatment | Chemical Nikel |

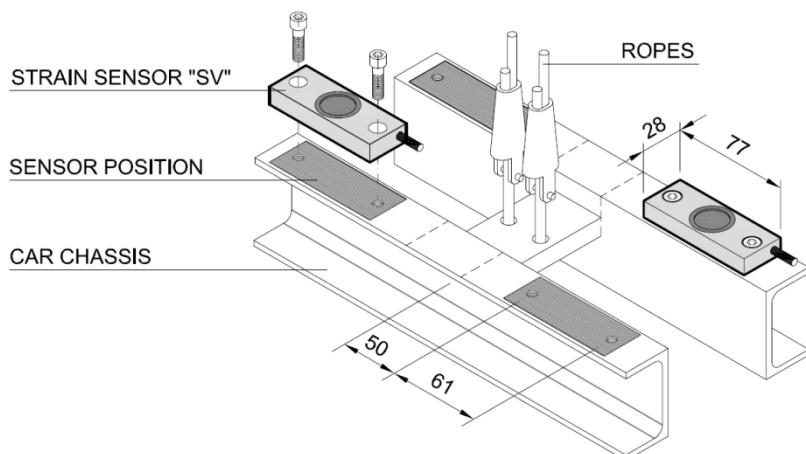


Deformation 1000µε

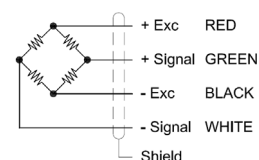
- Sensor designed to work on traction and compression, especially for weighing depending on the deformations of steel Beams.
- Easy to install and suitable for any type of beam.
- Application: load limitation on metallic structures, elevation systems (lifts, elevators, freight elevators...).



Dimensions in mm.



Wiring Diagram

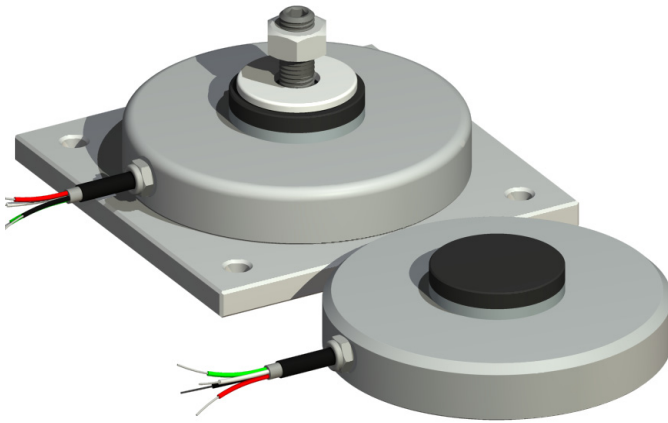


Technical Characteristics

| | | | |
|----------------------------|-----------------|---|--|
| Sensibility | 2 mV/V @ 1000µε | Output Resistance | 350 ± 2 Ω |
| Tolerance Adjust on Zero | ± 20 % F.S. | Minimum Insulation Resistance (V.Test = 100V) | 4 GΩ |
| Tolerance on Zero | ± 10 % F.S. | Maximum Deformation | 150 % F.S. |
| Maximum Excitation Voltage | 12 V | Maximum Working Load | 150 % F.S. |
| Accuracy | 0.3 % | Cable Type | Ø4 - 4 x 0.14 mm ² Shielded |
| Service Temperature Range | -20...60 °C | Cable Length | 6 m |
| Input Resistance | 350 ± 2 Ω | Material | Aluminum |

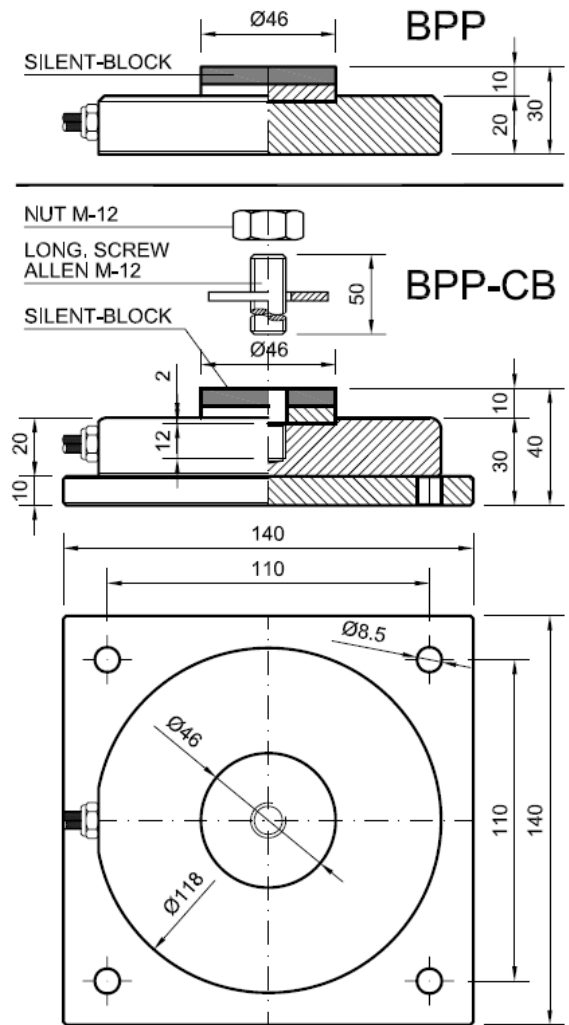
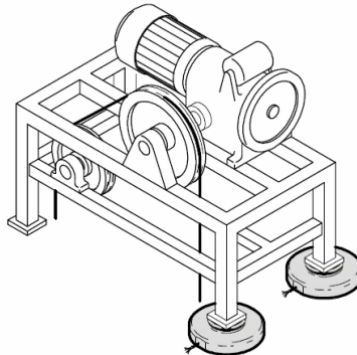
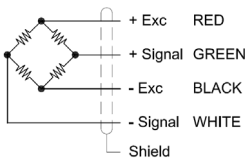
BPP

BPP-CB



- Load cells designed to install under motor bedframe
- 2 Models **BPP** supported
- **BPP-CB** bolted to bench
- Equipped with silent-block to prevent the transfer of vibrations.
- It is recommended to Install at least two cells to obtain high precision
- You can install up to 4 load cells connected in parallel to a unit control **RCU & VK-series**

Wiring Diagram



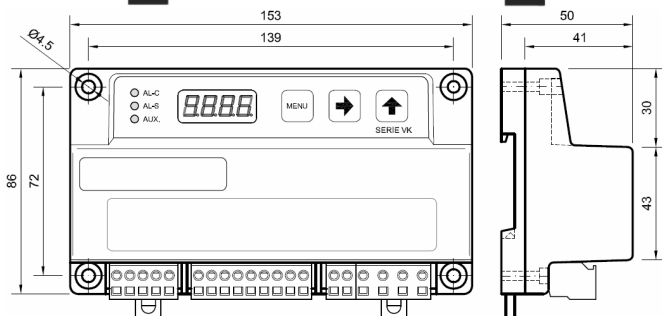
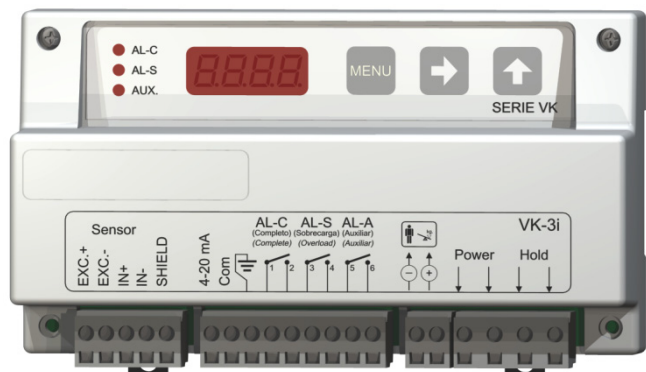
Dimensions in mm.

Technical Characteristics

| | | | |
|-----------------------------------|------------------|---|------------------------------------|
| Nominal Load (nL) | 1.5, 3, 5, 6.5 t | Non Linearity | 0.065% F.S. |
| Sensibility | 1.4...2.0 mV/V | Maximum Excitation Voltage | 12 V |
| Tolerance Adjust on Zero | 5 % F.S. | Minimum Insulation Resistance (V.Test = 100V) | 4 GΩ |
| Temperature Effect on Sensitivity | 0.080% F.S. | Maximum Working Load | 150 % F.S. |
| Temperature Effect on Zero | 0.035% F.S. | Break Load | >300 % F.S. |
| Compensated Temperature Range | -10...40 °C | Protection Class | IP67 |
| Service Temperature Range | -20...60 °C | Cable Type | Flexible Ø6 4x0.22 mm ² |
| Input Resistance | 350 ± 3Ω | Cable Length | 4 m |
| Output Resistance | 350 ± 2Ω | Material | Alloy Steel |
| Hysteresis Error | 0.067 % F.S. | Surface Treatment | Chemical Nikel |

Serie VK

Standard Models for Elevators



The VK series stands out for its wide range of models and its great versatility to give solution to all the possible necessities, that acts to the control and load limitation in elevators.

- The VK series includes software that depending on the model, it can carry out functions such as: detection of errors, auto-calibration (adjustment of the load without necessity of introducing a known weight in the cabin), compensation of the weight of the chain, etc...
- Flexibility in the fixation of the unit (rail DIN or fixed screws).
- Applicable for any measurement system like weighing in cabin, cables, motor bedframe, etc.
- Compact box manufactured in ABS fireproof material.
- Programming keyboard.
- 4 Digits display.
- Cabin display output, inhibition input (Hold).

VK-OMEGA

This unit is prepared to be used with the sensor SW-OMEGA. Their specific software allows:

- To carry out the standard functions of any load weighing system, such as control and limitation of the load (complete, overload etc.).
- To visualize the weight that supports each one of the cables.
- To carry out the adjustment of the load at each rope. The software will guide you automatically to get a perfect balance on the loads.
- Assign a value of alarm level for the unbalance between the ropes, so that once surpassed the alarms threshold it will give a signal alarm.

Relay alarm: 3
 Output: 1 (Cabin Display)
 Accuracy : 0,1%
 Power supply: 230 Vac
 Communication: RS-485

VK-3

Relay alarm: 3
 Output: 1 (Cabin Display)
 Power supply: 230, 115, 48 Vac

VK-3V

Relay alarm: 3
 Output: 1 (Cabin Display),
 1 (0-10 V ± 1%)
 Power supply: 230, 115, 48 Vac, 24 Vdc

VK-3SV

Relay Alarm: 3
 Output: 1 (Cabin Display),
 Used for Sensor SV
 Power Supply: 230, 115, 48 Vac

VK-3i

Relay alarm: 3
 Output: 1 (Cabin Display),
 1 (4-20 mA +_ 1%)
 Power supply: 230, 115, 48 Vac, 24 Vdc

Technical Characteristics

| | | | |
|-----------------------|--|--|--|
| Power Supply | 115 VAC ó 230 VAC 50-60 Hz - Maximum 5W | Cabin Output Display (Buzzer) Programable Working Mode. | MB-D (2 Wires Without Polarity) or Intermittence Overload 9V |
| Number of Alarms | 3 | User Interface | Display 4 Digits & 3 Keys |
| Relay Contacts | 250V / 3A | Material Box | Fire Proof ABS |
| Analog Output | 4-20 mA | Protection Class | IP-50 |
| Hold Inhibition Input | 24...230 VAC/VDC | Fixing | Screws or DIN Rail |
| Accuracy | 0.1% F.S. | Load Cell Connection Cable | EXC. (+) Red EXC. (-) Black IN (+) Green IN (-) White SHIELD |
| Temperature Range | -10...60 °C | | |
| Programming | By Keyboard | | |

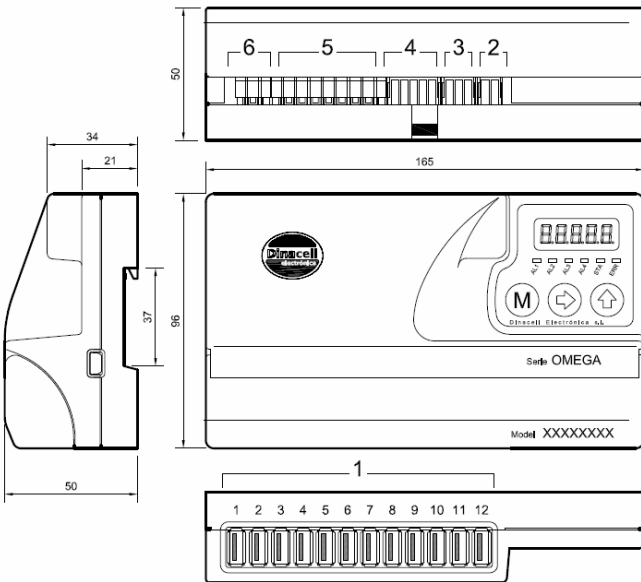


OMEGA^{NG}



OMEGA^{NG} is a load control Unit that monitors and limits Load in Elevators and measures up to 12 individual rope tension sensors. It can interface with controllers through Alarm Relays or analog outputs, as well as Can Bus communications.

| Model | Sensors | Output Relays | Analog Out 0-10V 0-20mA | Hold Input (Cade) | Cabin Display MB | CanOpenLift 417 | Interface | NG Wifi and USB update | WRT Testing Tool | |
|--------------|---------|---------------|-------------------------------|----------------------|---------------------|--------------------|---------------------------|---------------------------|---------------------|-----|
| OMEGA6-4RMA | 6 | 4 | Yes | Yes | Yes | - | 5 Digits, 6 Leds & 3 Keys | Yes | - | |
| OMEGA6-4R | | - | - | Yes | - | - | | Yes | | |
| OMEGA6-C | | - | - | Yes | - | Yes | | Yes | | |
| OMEGA6-Ca | | - | Yes | Yes | - | Yes | | Yes | | |
| OMEGA12-4RMA | 12 | 4 | Yes | Yes | Yes | - | | Yes | | |
| OMEGA12-4R | | - | - | Yes | - | - | | Yes | | |
| OMEGA12-C | | - | - | Yes | - | Yes | | Yes | | |
| OMEGA12-Ca | | - | Yes | Yes | - | Yes | | Yes | | |
| OMEGA-RT | - | - | - | - | - | - | | Yes | | Yes |



Dimensions in mm.

ELEVATOR INTERFACE:

- Models for 6 or 12 Load Cells (USB type Connector)
- 4 Alarm Relay Outputs (Full Load, Over Load, Zero Cabin, Slack Rope Tension)
- Can Bus Communications: CanOpenLift Cia-417(*optional*)
- Analog Output: 4-20ma, 0-10V or 0-5V(*optional*)
- Hold Input
- Cabin Display indicator(*optional*)

USER INTERFACE:

- Very easy to configure with 3 Control Keys
- 5 Digits display with 4 LEDs for alarm indication and 2 LEDs for Can Status.
- Wifi connection to check the unit remotely
- USB Port for Firmware upgrading

OTHER CHARACTERISTICS:

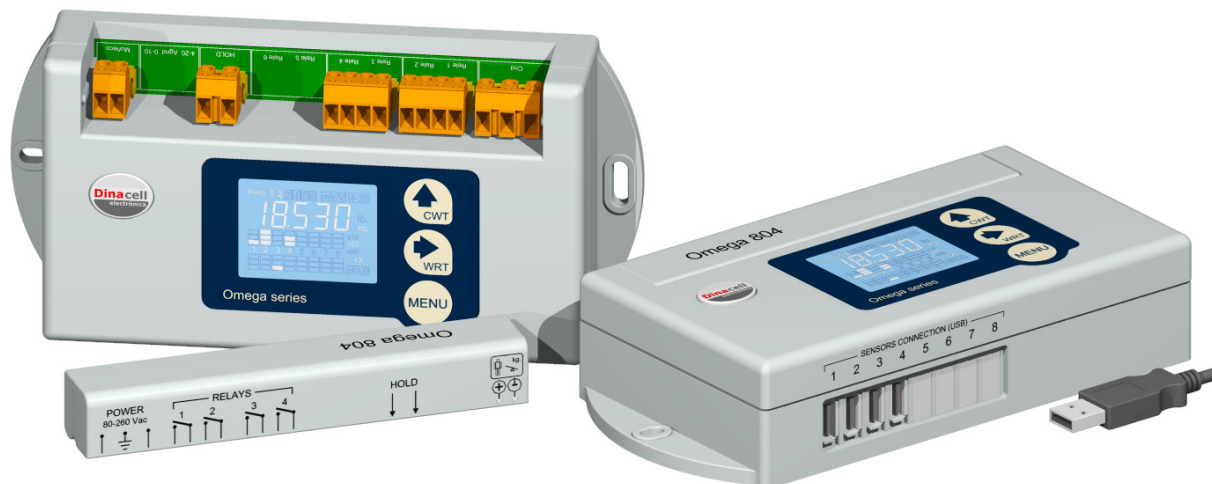
- Wire Rope tension Equalization wizard
- Malfunction sensors detection
- Hardware and software chain compensation function
- Shortcircuitable power supply, no need to replace any fuse
- Compatible Dinacell Sensors: SWK, SWR, TCA, LCA

WIFI Dongle: Remote Weight Monitoring and Wire Rope tension Equalization wizard for Tablets, Smartphones and Laptops

Technical characteristics

| | |
|--|--|
| Power supply | 10-40 Vdc |
| Maximum Current Consumption | < 200 mA |
| Hold inhibition input | 24...230 VAC/VDC |
| Temperature Range | -10...60°C |
| Cabin display Output | MB-D or 5v intermittent |
| Protection class | IP-50 V0 |
| Box material | Fireproof plastic ABS |
| Relay Contacts (Nominal Switching Capacity) | 4 Relays: 1A 30V DC 0.3A 125 VAC |
| Analog Output | 4-20ma And 0-10V (0-5v <i>Optional</i>) |
| Accuracy | 0.03% F.S |
| User interface | Display 5 Digits & 3 Keys, 6 LEDs |
| Chain compensation | By software or Hardware |
| Fixing | DIN rail |





OMEGA-804 is a load control unit to monitor and limit the lifts charge as well as to measure individual rope tension.

LIFT INTERFACE

- Up to 8 charge cells can be connected (with a USB connector).
- Four programmable alarm relays to indicate full charge, overload, non uniform cable tension and general objectives.
- Cabin display output.
- HOLD function to inhibit measurements when the lift is moving.

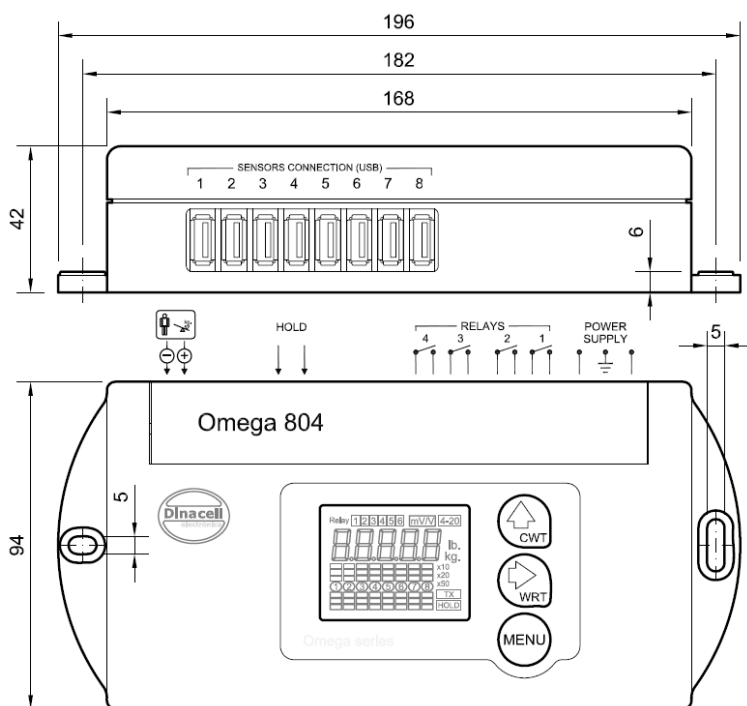
USER INTERFACE

- Very easy configuration with 3 control keys.
- 5 digits display with indicators for:
 - Alarms situation.
 - HOLD input situation.
 - Cable tension (numeric or 6 levels toolbar).
 - Configured sensors number.
 - Measure units.

OTHER CHARACTERISTICS

- Lift chain compensation function.
- Cortocircuitable power supply: no need to replace any fusible

Compatible Dinacell sensors: SWK, SWR, TCA-800 and LCA



Dimensions in mm.

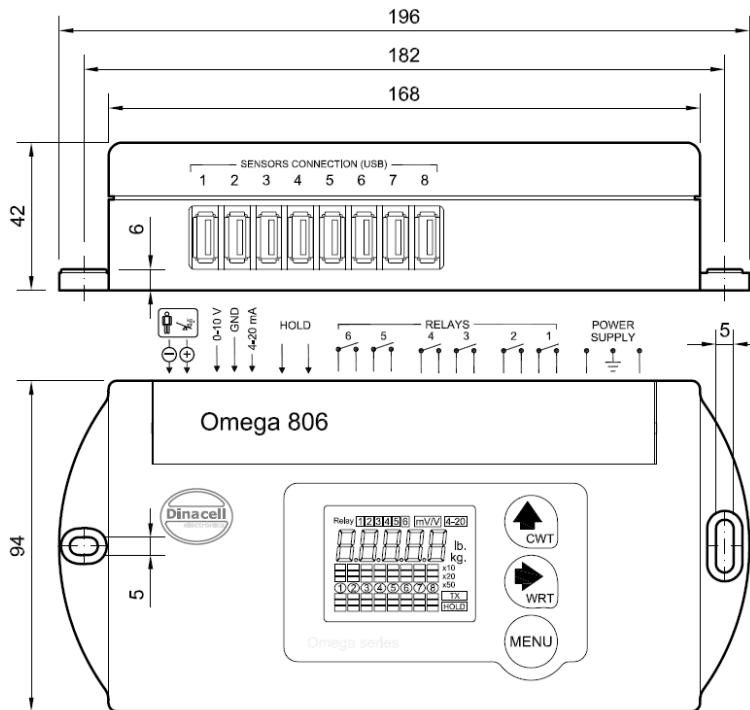
Technical Characteristics

| | | | |
|----------------------------|--------------------|---|----------------------------|
| Power Supply | 80-260 Vac 50-60Hz | Relay Contacts (Maximum Voltage/Stream Energy) | 250 V |
| | 24Vdc | | 3 A |
| Maximum Energy Consumption | 6 W | Accuracy | 0.1 5 % |
| HOLD Input Voltage | 260 Vac or 24 Vdc | Frame | Fireproof Plastic V0 IP-50 |

OMEGA-806



OMEGA-806 is a load control unit to monitor and limit the lifts charge as well as measure individual rope tension.



Dimensions in mm.

LIFT INTERFACE

- Up to 8 charge cells can be connected (with a USB connector).
- Six programmable alarm relays to indicate full charge, overload, non uniform cable tension and general objectives.
- Cabin display output.
- HOLD function to inhibit meditions when the lift is moving.
- Selectable analogic output: 0-10V or 4-20mA

USER INTERFACE

- Very easy configuration with 3 control keys.
- 5 digits display with indicators for:
 - Alarms situation.
 - HOLD input situation.
 - Cable tension (numeric or 6 levels toolbar).
 - Configured sensors number.
 - Measure units.

OTHER CHARACTERISTICS

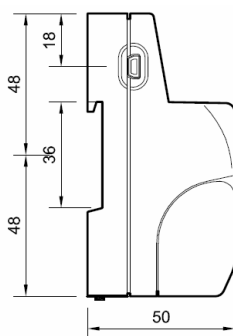
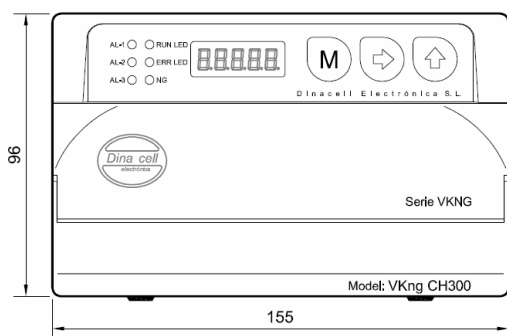
- Lift chain compensation function.
- Cortocircuitable power supply: no need to replace any fusible

Compatible Dinacell sensors: SWK, SWR, TCA-800 , RTM, RTM2 and LCA

Technical Characteristics

| | | | |
|----------------------------|--------------------|---|----------------------------|
| Power Supply | 80-260 Vac 50-60Hz | Relay Contacts (Maximum Voltage/Stream Energy) | 250 V 3 A |
| Maximum Energy Consumption | 6 W | Accuracy | 0.1 5 % |
| HOLD input Voltage | 260 Vac or 24 Vdc | Frame | Fireproof Plastic V0 IP-50 |
| Analog Output Accuracy | 0.5% F.S. | | |

VK-ng (CO350 & CH300)



Dimensions in mm.

- Load limiter in cranes and elevators with a 0.1%F.S. measurement accuracy
- Three relays of open contacts for three levels of selectable alarms.
- Allows to connect until 10 load cells of 350Ω.
- Input for temporal (HOLD) measure inhibition.
- Compact box of ABS fireproof material.
- Fixing DIN rail.

| VKng CO350 | VKng CH300 |
|--|---|
| <ul style="list-style-type: none"> • Sensor input Style sockets 5mm for one weight measure load cell. (SWK, SWR, TCA, LCA) • Can Open 417 Open Style connector • Chain compensation software | <ul style="list-style-type: none"> • Sensor input Style socket 3.5mm mm for one chain measure load cell. • Open Style sockets 5mm for one weight measure load cell. (SWK, SWR, TCA, LCA) • Chain compensation software & hardware |

Analog outputs This output reflects the sensors signal over the range 0-10V and 4-20mA. Common signal is GND.

Cabin display output: It provides two types of output:

INC: Progressive display MB-D (two wire connection without polarity).

LED: If overload, it will be an intermittent voltage of 12V (max. 30mA) with the polarity shown in the figure.

Relay connections for alarms Terminals of the alarm relays.

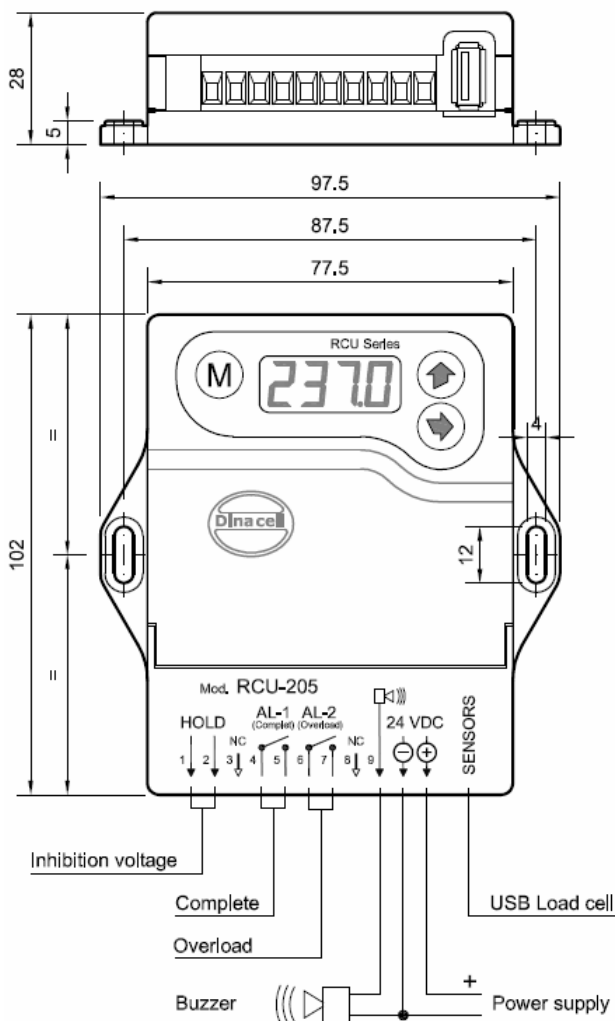
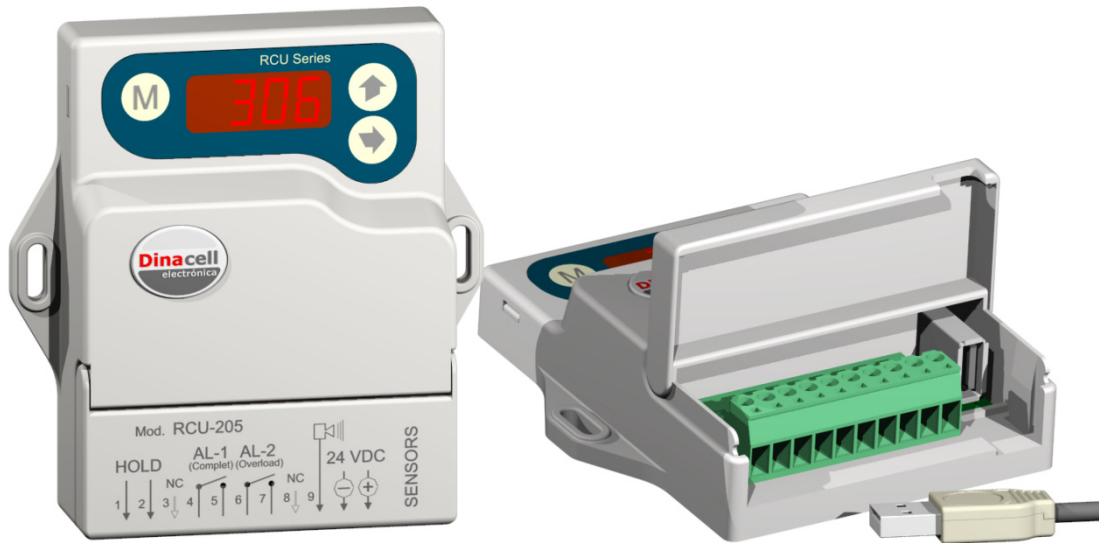
Power supply Input: 100-240VAC power supply

HOLD input This function will be activated when an input voltage of 24 to 230V (DC or AC) is applied.

Technical characteristics

| | | | |
|--|-------------------------------|-------------------------|---------------------------|
| Power supply | 100 - 240 VAC / Máximun 5W | Temperature range | -10 ... 60 °C |
| Number of alarms | 3 | User interface | Display 5 digits & 3 keys |
| Relay contacts | 250V / 3A - N.A. | Box material | Fire proof ABS |
| Analog output | 0-10V y 4-20mA | Protection class | IP-50 |
| Hold inhibition input | 24 ... 230 VAC/VDC | Fixing | DIN rail |
| Accuracy | 0.03% F.S. | Chain compensation | Software or hardware |
| Cabin display output programable working mode. | MB-D (2 without polaryty) | Connecting sensor cable | EXC. (+) Red |
| | 12V intermitent with polarity | | EXC. (-) Black |
| | | | IN (+) Green |
| | | | IN (-) White |
| | | | SHIELD Shield |

RCU-205

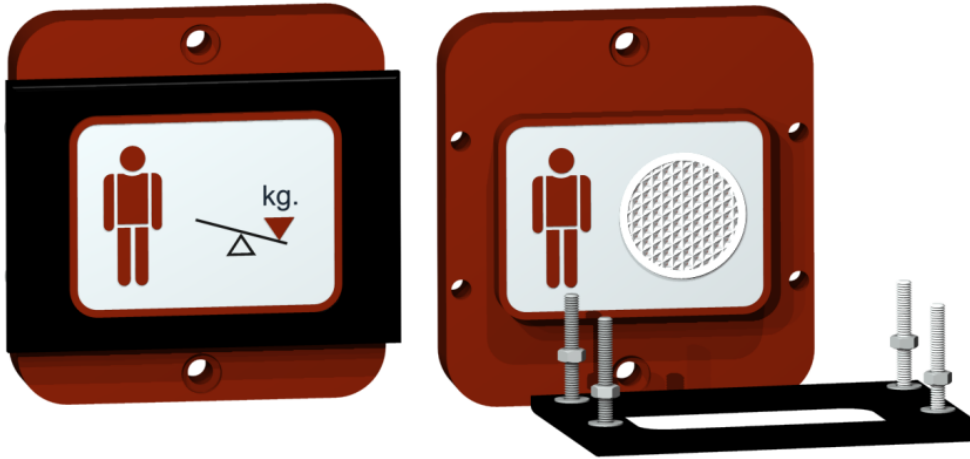


RCU-205 is a weight limit measuring device

- Device developed especially for elevators
- Low energy consumption
- Chain compensation
- Possible adjustment without weight
- Power for up to twelve sensors (16 if the model is TCA)
Note: For more sensors ask to Dinacell
- Device valid for all weighting modes (cable, under cabin...)
- Digital programming via keyboard
- Four digits display
- Two alarms with relay (programmable relay state).
- Weight precision of 0.1 %
- Low Cost Device

Electric Characteristic

| | |
|------------------------------|------------|
| Power Supply | 24 VDC |
| Energy Consumption | 2 W |
| Relay Contact Voltage | 250 V |
| Relay Contact Current | 3 A |
| Hold Signal (AC/DC) | 24 - 230 V |
| Load Cell Excitation Voltage | 3.3 V |
| Protection Class | IP-50 |



Note:

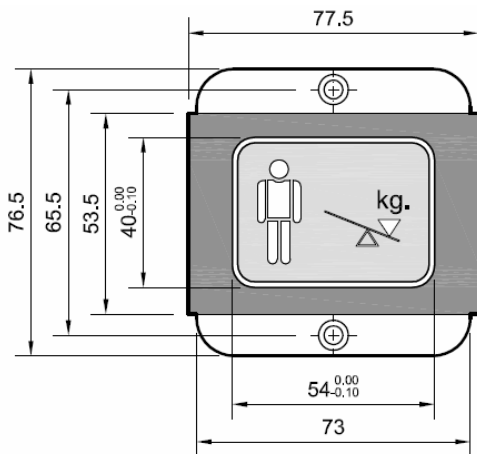
Valid for the following control unit:

- Omega_NG
- LCK_NG
- SV_NG
- CH_NG

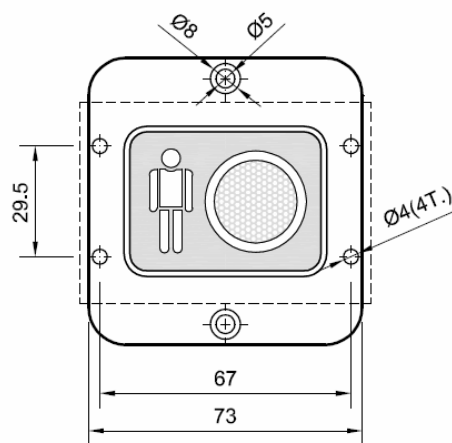
Cabin display designed to see the progressive load indication (luminosity) in the elevator.

| Model | MBD | MBL | MBN1 | MBNL1 | MBN6 | MBNL6 |
|--|-----|-----|------|-------|------|-------|
| Visual Progressive load indication | X | X | - | - | X | X |
| Visual indicator of full load | X | X | X | X | X | X |
| Visual and sound indicator of overload | X | X | X | X | X | X |
| Emergency lighting | - | X | - | X | - | X |
| 2 wires connections without polarity | X | X | - | - | X | X |
| Front panel made of stainless steel | X | X | X | X | X | X |
| Valid for control unit NG | - | - | X | X | X | X |

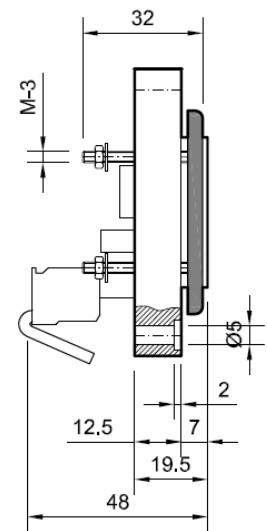
Dimensions in mm.



- MBD
- MBN1
- MBN6



- MBL
- MBNL1
- MBNL6



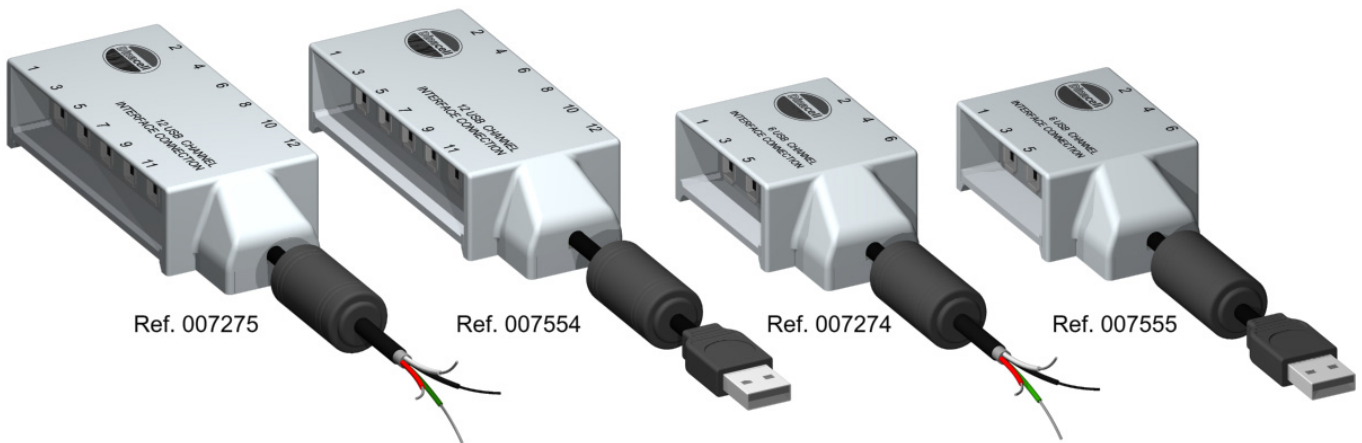
Remarks:

For other designs and special measures, contact with our commercial department.

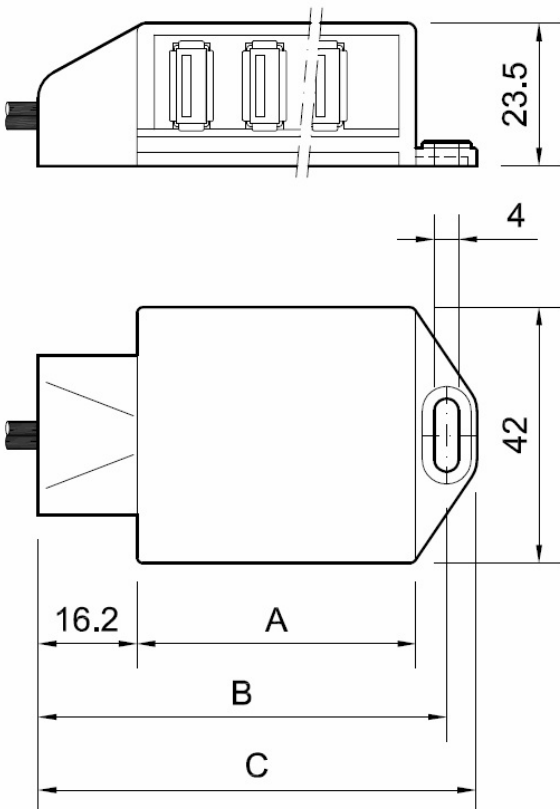
Installation:

- Furred with the decorative panel (rear fixing).
- Fixed with the black plastic frame supplied by Dinacell (available on request), sandwich type.

6-12 USB



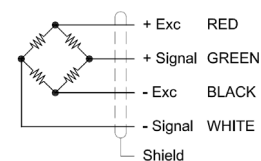
- You can order the sensors SWK or TCA800 independently or by group.
- You could create your stocks for the quick response to the clients.
- If one of the sensors has a problem, you could replace only the defective sensors and not all.
- Could have a chance to choose easily the cable length 0.5m or 2m as standard cable for the sensor SWK.
- Could easily connect sensors up to 12 sensors in one group.
- Simplify the numbers of items and could combine the number of sensors required on each application.
- Available to plug it to devices with 5 wires connection or USB connection.
- Available with 6 or 12 channels.



Dimensions In mm

| | 6 USB | 12 USB |
|---|-------|--------|
| A | 48 | 84 |
| B | 69 | 105 |
| C | 74 | 110 |

Wiring Diagram



Technical Characteristics

| | |
|-----------------------|------------------------------------|
| Temperature Range | -20...60 °C |
| Protection Class | IP-50 |
| Material | Fire Proof ABS |
| Cable Type | Flexible Ø4 4x0.22 mm ² |
| Cable Length | 5 m + Ferrite |
| Cable end Termination | 5 Wires USB |



RTM Sensor

Sensor for testing and monitoring elevator cables

- Fast and easy to install and uninstall without tools.
- Calibrated in the factory.
- Two sizes cover cables from 4 to 20 mm.
- Quick connection with analog USB connector.

Technical Characteristics

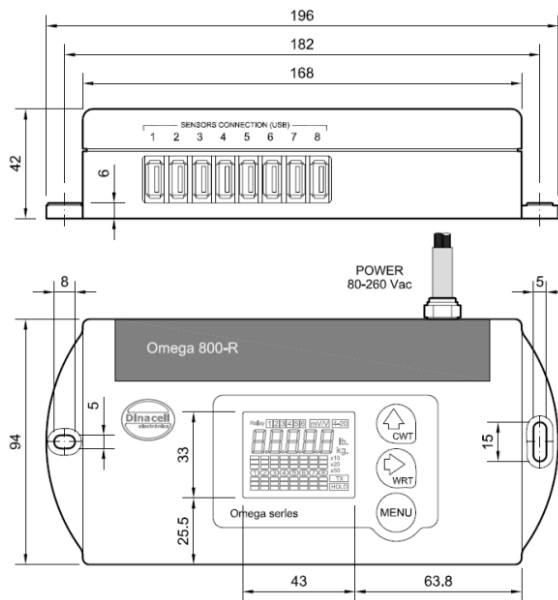
| | |
|---|--------------|
| Tension of Excitement | 5...12 V |
| Non Linearity | <0.15 % F.S. |
| Non Repeatability | <0.15 % F.S. |
| Hysteresis | <0.05 % F.S. |
| Combined Error | <0.2 % F.S. |
| Input Resistance | 350Ω ± 2 |
| Output Resistance | 350Ω ± 2 |
| Insulation Resistance...(V. Test =100V | 5.000x106 |
| Maximum Work Load | 150 % F.S. |
| Load Limit Without Lost of Characteristic | 200 % F.S |

Nominal Load for Ø of Rope

| Ø (mm) | RTM1 (Ø5 a 13mm.) | | | | | | | RTM-2 (Ø13 a 20mm.) | | | | | | | |
|--------------|-------------------|-----|-----|-----|-----|-----|-----|---------------------|-----|------|------|------|------|------|------|
| | Ø5 | Ø6 | Ø8 | Ø9 | Ø10 | Ø11 | Ø12 | Ø13 | Ø14 | Ø15 | Ø16 | Ø17 | Ø18 | Ø19 | Ø20 |
| Kg/rope (NI) | 200 | 250 | 350 | 400 | 450 | 550 | 650 | 800 | 950 | 1100 | 1250 | 1450 | 1600 | 1700 | 1800 |

Control Unit OMEGA-800R

- Device for wire rope tension control (WRT) adjustment and monitoring.
- It Gives the measurement of the car weight (CWT) & counter weight (CTWT).
- 5 Digits LCD with 8 bars that show the deviation of each rope.



Technical Characteristics

| | |
|--------------------------------|--------------------------|
| Universal Power Supply | 80-260 Vac |
| Load cell USB Inputs | 8 sensors RTM |
| Maximum Current | 130 mA |
| Nominal Frequency | 50-60 Hz |
| Shortcircuitable Power Supply. | Fuse is not Replaceable. |

Dinacell Hong Kong



In new global expansion scenery, Dinacell has the commitment to enhance the service to our Asian clients.

Since 2013, the Hong Kong subsidiary is offering a quick response to the demand supplying directly from its warehouse based in Hong Kong covering the Asian market and assisting our clients in their most suitable product for their needs.

The subsidiary brings the opportunity to have the highest European quality product with a short delivery time, with a competitive and more than satisfactory customer relationship. Both are the sign of identity of Dinacell Electrónica.

Our new office is located in the building of Admiralty Centre-Tower II situated in the heart of Admiralty area Hong Kong Island.

11/F, Admiralty Centre Tower II,
18 Harcourt Road, Admiralty,
Hong Kong

Phone.: +852 3975 3014

Fax : +852 3975 3000

www.dinacell.com

e-mail: dinacell.hk@dinacell.com /

imartinez@dinacell.com

Dinacell Uruguay

Our company Dinacell Electrónica has established in 2013 a subsidiary in Montevideo (Uruguay), able to expand and promote our business in the American countries like Argentina, Brazil, Chile, Uruguay, Mexico and other countries from MERCOSUR.

Dinacell Uruguay subsidiary will also cover up the demand and the logistic supply of the materials to all Latin American countries.

Calle Zabala 1327, Edificio Zurich, Oficina 210
11000 Montevideo (Uruguay)

Phone.: +598 291 667 44

Fax : +598 291 661 64

Celular : +598 937 254 28

www.dinacell.com

e-mail: dinacell.ur@dinacell.com

adiez@dinacell.com





Empire State Building
(USA) 10 LWD



CN Tower
(Canada) 6 LWD



Eiffel Tower
(France) 4 LWD



Beijing Silvertie Center
(China) 50 LWD



Freedom Tower
(USA) 75 LWD



Shanghai World Financial Center
(China) 50 LWD



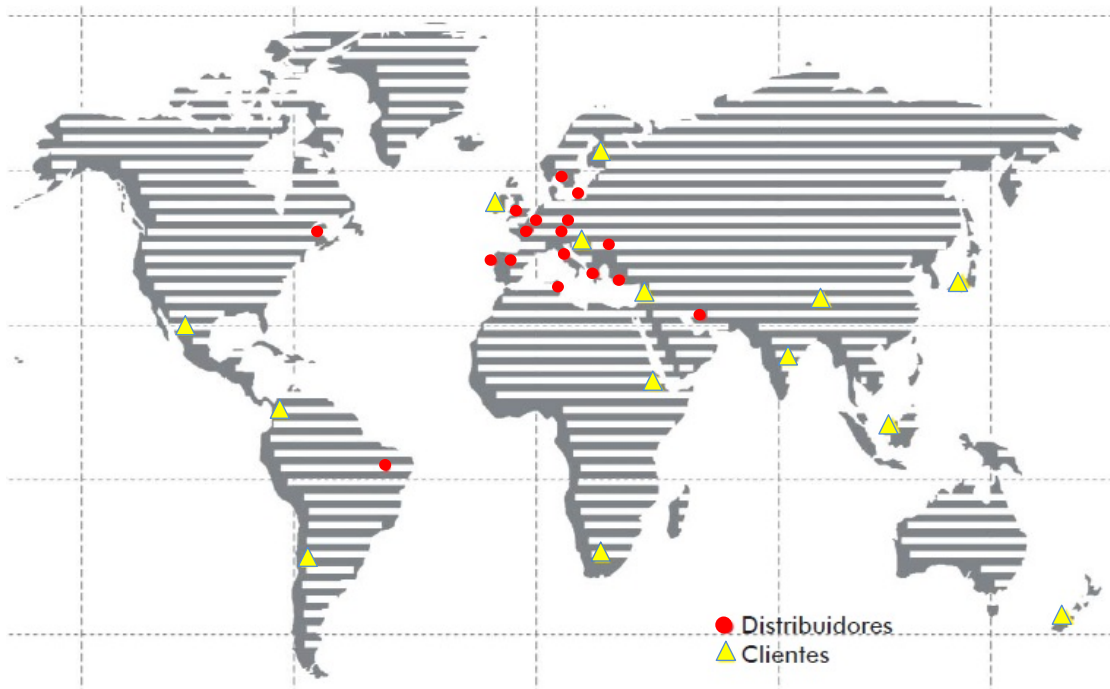
Petronas Twin Towers
(Malaysia) 12 LWD



Space Needle - Seattle
(Washington) 4 LWD



Burj Dubai
(UAE) 60 LWD



BELARUS

System Analysis S

Mogilevskaya st., 14
220007 Minsk
Tel: +37517-2054250
Fax: +37517-2054252
e-mail: Irina.kirilchik@sas.by
URL: www.sas.by

BRAZIL

Incom Elevadores Lda.

Rúa Tpoazio 117 Bairro Calafate
30-410-280 Belo Horizonte
Tel: +55 31 3332- 8749
e-mail:
gabriel@incomelevadores.com
URL: www.incomelevadores.com

BULGARIA

Vario Speed Ltd.

20, Tsar Assen Str.- 4000 Plodiv
Tel: +359 32 575 615
Fax: +359 32 575 615
e-mail: import.variospeed@gmail.com

CZECH REPUBLIC

Liftec Group s.r.o.

Pražská 18 / CZ-102 00 Prague
Tel: +420 267 219 329
Fax: +420 271 751 289
e-mail: liftec.group@seznam.cz

GERMANY

AVERDI

Inh. Peter Erdmann

Handelsring 6
D-26624 Südbrookmerland
Tel: +49 4942 204683-0
Fax: +49 4942 204683-111
e-mail: info@averdi.de
URL: www.averdi.de

INDIA

Sree Gajanana

127, Diamond Industrial Estate,
Ketkipada Road
Tel: +91 22 28979106
Fax: +91 22 28979106
e-mail: baliga.sunil@yahoo.com

IRAN

Eskan Faraz Delta (agent)

1st floor, no 24, West 66
Alley, Golestan St, Zartoshtian St,
South Shiraz St .Tehran
Tel: +9821 88039270
Fax: +9821 88212563
e-mail: info@ef-delta.com
URL: www.ef-delta.com

ITALY

Movilift s.r.l.

Via Nápoli 348
80053 Castellmare di Stabia, Napoli
Tel: +39 0 81 8713646
Fax: +39 0 81 19308204
e-mail: engineering@movilift.com
URL: www.movilift.com

PORTUGAL

Abilio Fernandez, Lda.

R. Eucaliptos nº 82, Bairro da
Encarnação - 1800 - 202 Lisbon
Tel: +351 21 8522405
Fax: +351 21 8514621
e-mail: aflda@mail.telepac.pt

SWEDEN

Hisstema AB

Hantverksvägen 13 - 151
65 Södertälje
Tel: +46 855423080
Fax: +46 855423099
e-mail: per@hisstema.se
URL: www.hisstema.se

TUNISIA

Dalmas Ascenseurs

114 Avenue Habib Thameur 8000
Nabeul - Tunisia
Tél: +216 72 233 222
Fax: +216 72 233 880
E-mail: info@dalmas-ascenseurs.com
http://www.dalmas-ascenseurs.com

TURKEY

Pinar Muhendislik

Halk sok. Golden Plaza C
Blok 29/3- 34735 Istanbul
Tel: +90 216 3866201
Fax: +90 216 3865978
e-mail: selmin@pinarmuhendislik.com
URL: www.pinarmuhendislik.com

UK

TLP - Traditional Lift Products Limited

Unit 2 The Brambles - Lees Road
- Kirkby Industrial Estate
L33 7RW Knowsley, Lancashire
Tel: +44 (0) 151 548 2121
Fax: +44 (0) 151 548 2269
e-mail: info@tradelifts.co.uk
URL: www.tradelifts.co.uk

USA

EMCO - Elevator Motors

80 Carolyne Blvd.. Farmingdale -
NY-11735-152 New York
Tel: +1 631 293 4440
Fax: +1 631 293 2714
e-mail: info@elevatormotors.com
URL: www.elevatormotors.com

Dinacell Electrónica s.l.

Pol. Ind. Santa Ana C / El Torno Nº 8 – 28522 - Rivas Vaciamadrid - Madrid

Tel.: +34 913 001 435 - Fax.: +34 913 001 645

E-mail: dinacell@dinacell.com - <http://www.dinacell.com>

Ref.: 9526-03
17/06/16